

Document Citation

| | |
|---------------|--|
| Title | American chooses 'Bamboo prison' |
| Author(s) | |
| Source | <i>Columbia Pictures</i> |
| Date | 1954 |
| Type | exhibitor manual |
| Language | English |
| Pagination | 2-7 |
| No. of Pages | 8 |
| Subjects | Francis, Robert (1930-1955), Glendale, California, United States Foster, Dianne (1928), Edmonton, Alberta, Canada Keith, Brian (1921-1997), Bayonne, New Jersey, United States |
| Film Subjects | The bamboo prison, Seiler, Lewis, 1954 |

★★★★
FINAL

DAILY PRESS

LATEST PICTURE NEWS

EXTRA

Vol. 12, No. 6

SPECIAL EDITION

For City and Suburbs

AMERICAN CHOOSES 'BAMBOO PRISON!'

ACCUSED TRAITOR TELLS ALL; BARES SHOCK-FILLED STORY!

U. S. Sergeant Robert Francis grimly talked to reporters today, outlining his sensational story of prison camp existence under Chinese warlords. Carefully detailing each move, Francis told a story that was filled with tense drama and lusty barracks room humor.

According to the Sergeant, a curvy cutie named Dianne Foster had a great deal to do with his look-see behind the infamous curtain. She was the wife of the commie commander and fit into his blueprints perfectly.

(For Additional Details, See Pages 2 through 8)



IT'S A RIOT! Yank captives inside "The Bamboo Prison" use sticks, rocks and fists to fight the infamous brain-washing techniques of Keye Luke (inset), commandant of "The Bamboo Prison!"

TEAMED!

Robert Francis and curvaceous Dianne Foster, whose romance rips open 'The Bamboo Prison'



COLUMBIA PICTURES presents

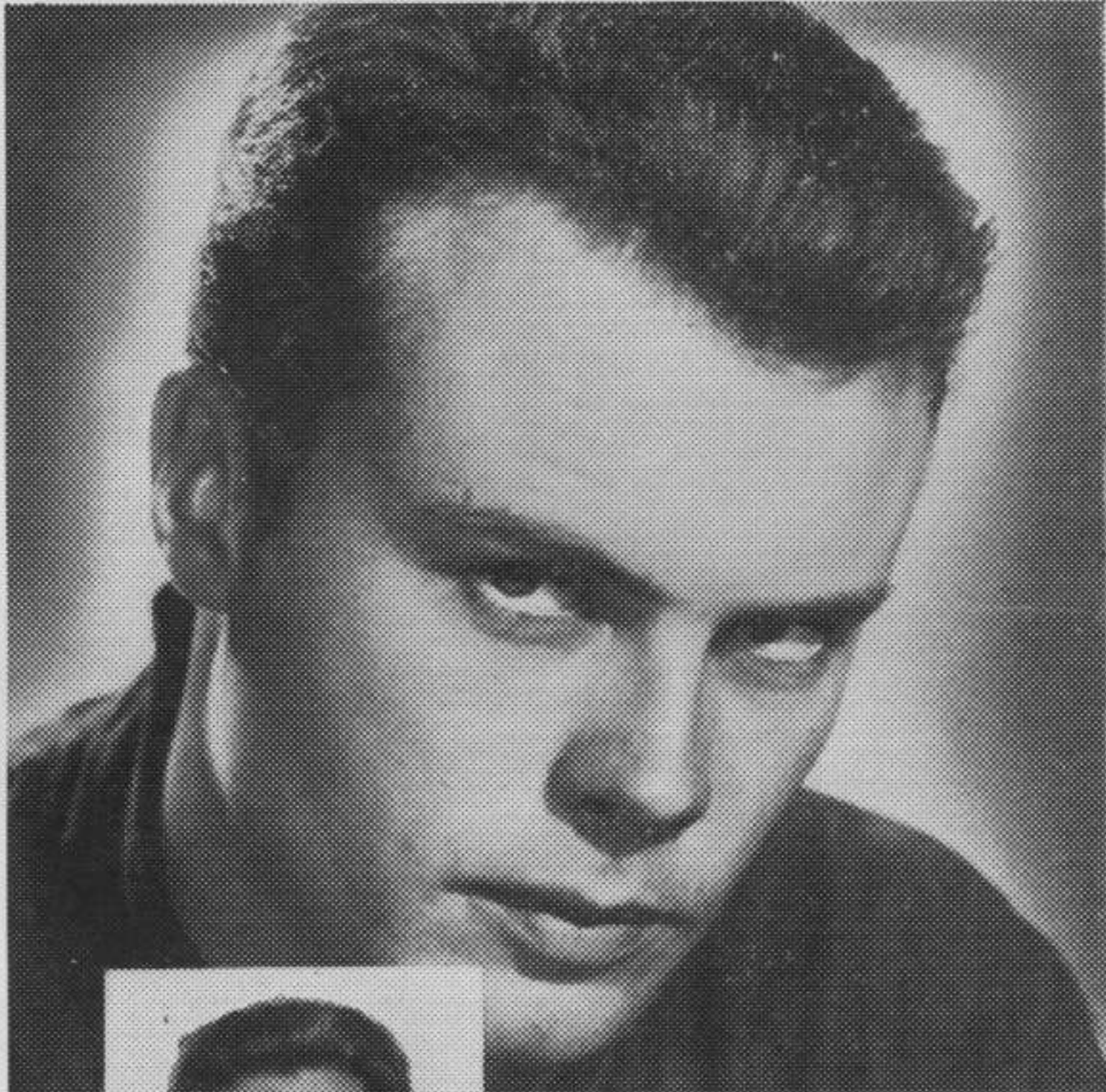
THE BAMBOO PRISON

starring **ROBERT FRANCIS • DIANNE FOSTER • BRIAN KEITH**

with **Jerome Courtland**

Screen Play by EDWIN BLUM and JACK DeWITT • Produced by BRYAN FOY • Directed by LEWIS SEILER

I WAS A PRISONER OF THE CHINESE!



Accused Traitor Tells All; Bares Shock-Filled Story!

Sergeant William Rand, tall, handsome GI, talked at length with reporters today about his experiences in Chinese Prison Camp No. 18. Rand explained in detail just why he had betrayed his fellow prisoners and attempted to justify his staying on behind the bamboo curtain in Red China after the armistice. As he spoke, the Sergeant's hands betrayed his tension. Here is Rand's own story:

"It all started the day Tanya came to camp. She was the luscious wife of one of the commie bosses. One look at her and I knew she'd fit into my plans perfectly. She was born to pitch curves.

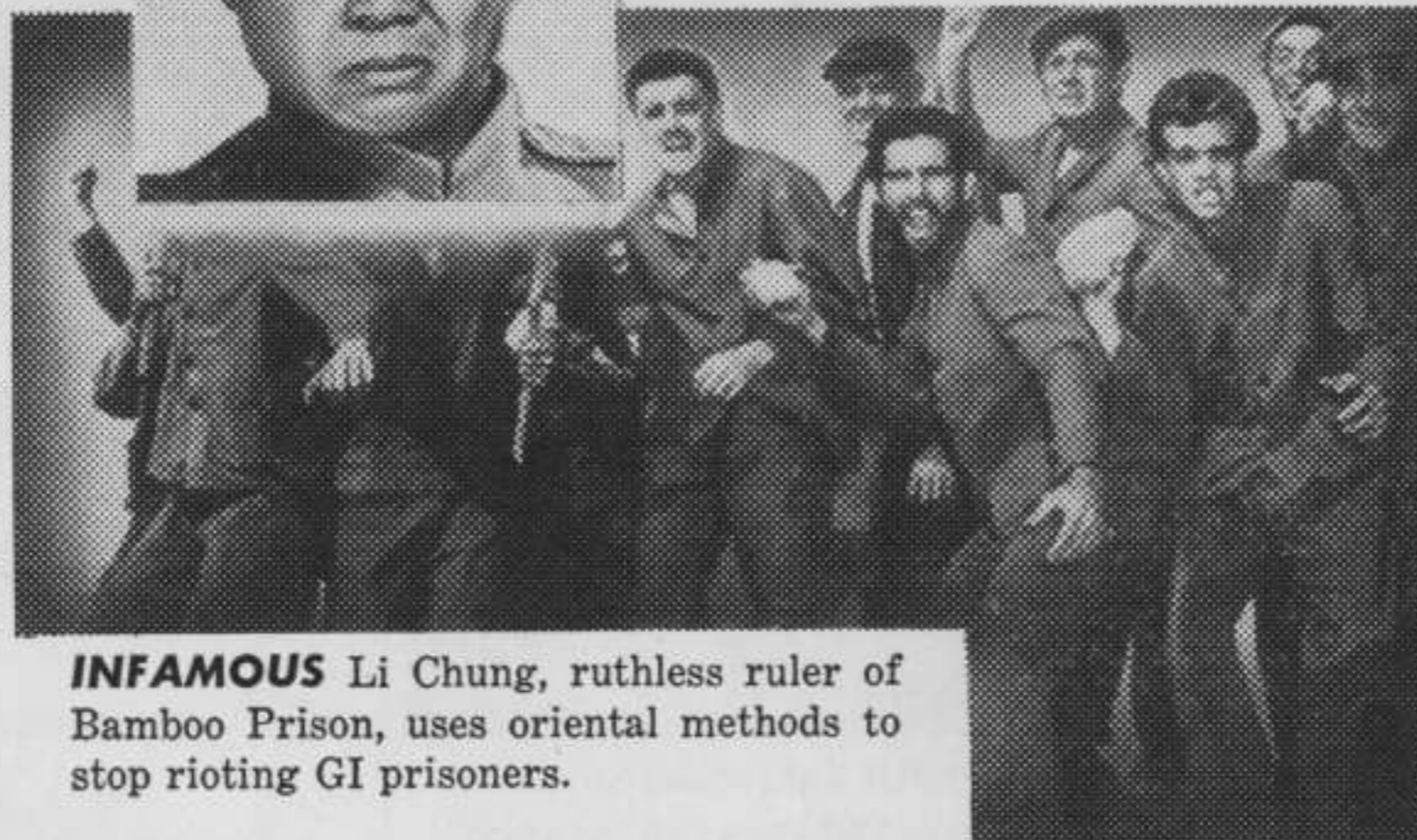
"I soon convinced my guards that I was ready to do their kind of business. And brother, from then on, I did business. Of course, Tanya turned out to be a little more than I

bargained for, but I had a few aces up my sleeve myself."

The whole dramatic story, including the wry barracks humor and infamous enemy brain-washing techniques, plus a thrilling battle between an unarmed G.I. and one of the Commies, has been filmed by Bryan Foy for Columbia Pictures. It is called **THE BAMBOO PRISON**.



HERO OR HEEL? Sgt. Rand definitely is on the spot in the hottest spot on earth...Red China!



INFAMOUS Li Chung, ruthless ruler of Bamboo Prison, uses oriental methods to stop rioting GI prisoners.



TANYA...the commie cutie who fit into Sgt. Rand's blueprints!

COLUMBIA
PICTURES presents

THE BAMBOO PRISON

starring

ROBERT FRANCIS · DIANNE FOSTER · BRIAN KEITH with **JEROME COURTLAND**

Screen Play by EDWIN BLUM and JACK DeWITT • Produced by BRYAN FOY • Directed by LEWIS SEILER

Ad Mat No. 401—560 Lines (4 Cols. x 140 Lines)

YANK PRISONER IN CHINA CHOOSES BAMBOO CURTAIN!

Did Sergeant Fall For Commie Cutie...Or Was He Pushed?

As the heavy-duty trucks rolled away to freedom, Sergeant William Rand, husky American GI, grimly chose to remain behind the bamboo curtain! Sergeant Rand talked freely to reporters and his sensational

behind-the-scenes narrative of life in a prison camp had tense drama packed into every minute of his breath-taking story.

Rand carefully went over all details from the day in camp when he

first met luscious spy, Tanya Clayton, until the very moment when he turned his back on freedom. In the course of his story, Rand discussed the indomitable spirit of our GI's, the wry humor that was ever-present in the guarded barracks and the infamous brain-washing techniques of the enemy war lords.

His powerful story was carefully noted and has been filmed by producer Bryan Foy for Columbia Pictures. It is called **THE BAMBOO PRISON**.



TRAITOR? Sgt. Wm. Rand still has us guessing. Is he hero or heel?



PRISON riot breaks out under ruthless rule of infamous Li Chung!



BEAUTIFUL Tanya Clayton has lots of curves and knows all the angles!

COLUMBIA
PICTURES
presents

starring

THE BAMBOO PRISON

ROBERT FRANCIS · DIANNE FOSTER · BRIAN KEITH

with **JEROME COURTLAND**

Screen Play by EDWIN BLUM and JACK DeWITT • Produced by BRYAN FOY • Directed by LEWIS SEILER

Ad Mat No. 302—400 Lines (3 Cols. x 133 Lines)

G. I. TRAITOR TELLS ALL!

I WAS A PRISONER BEHIND THE BAMBOO CURTAIN!

by Sergeant Wm. Rand

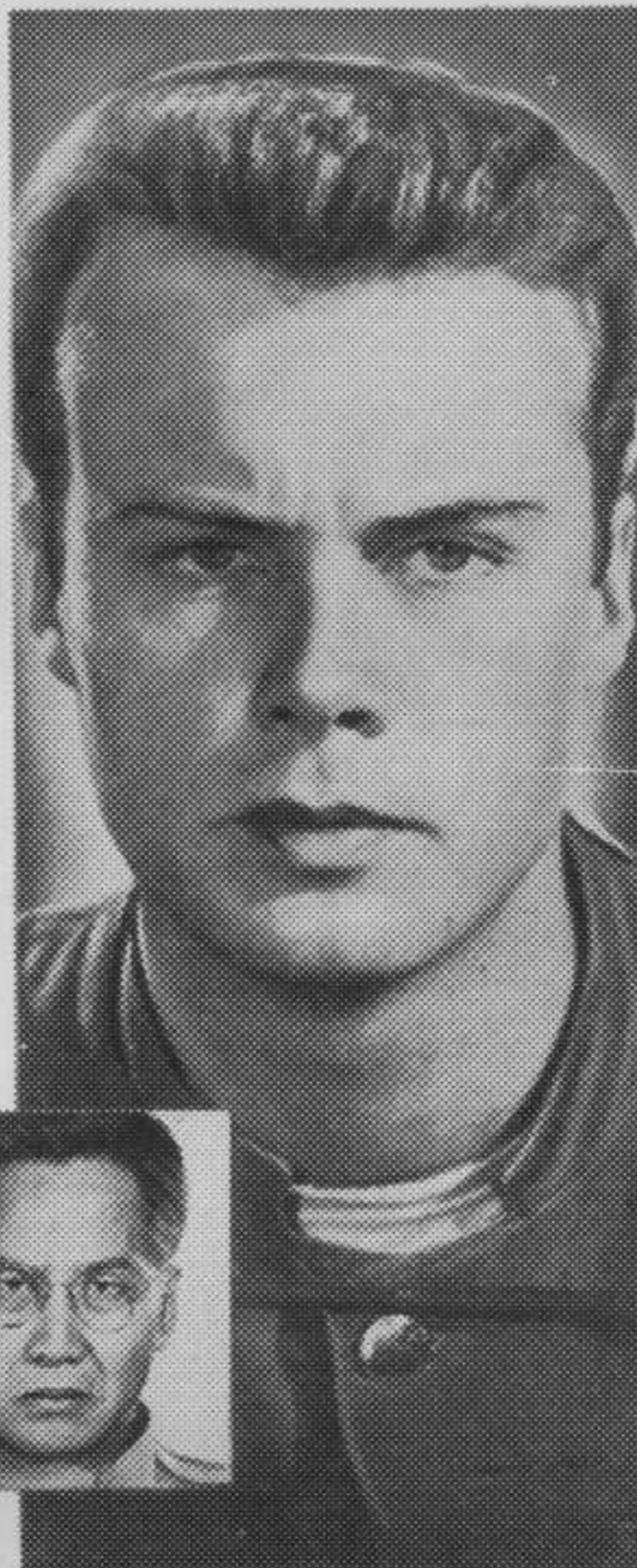
"It all started the day Tanya came to camp. She was young. She was beautiful. And she was the first woman I'd seen in six months. She also happened to be the wife of the commie commander.

"It didn't take me long to realize how perfectly Tanya would fit in with my plans. All I needed was the right

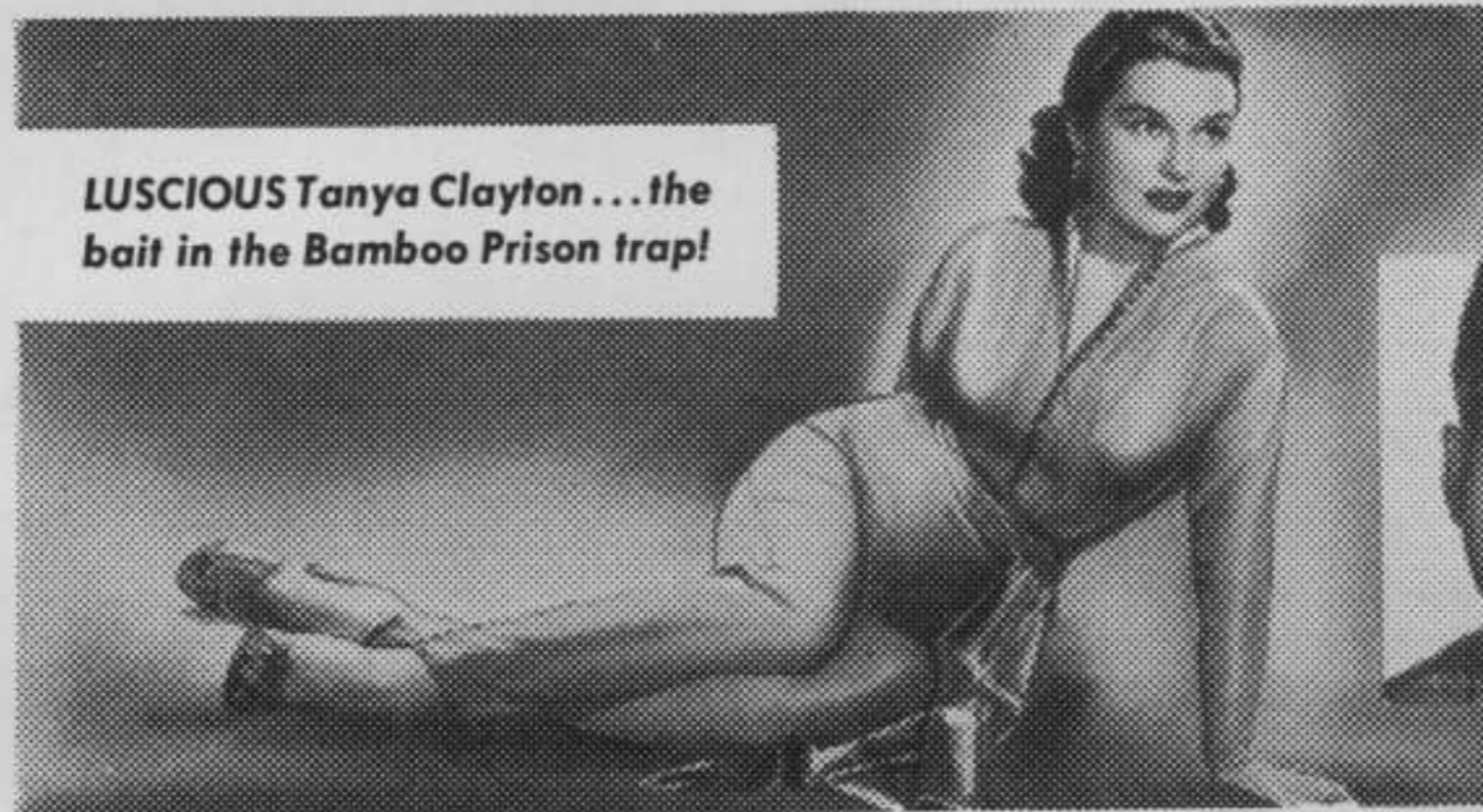
angle. And it didn't take long for that.

"But Tanya fooled me. She had some angles too. Plus curves. She could take on any batter. Believe me.

"Sure, I know the boys are calling me a traitor. But if they knew what I know, they'd be singing a different tune. That's why I'm talking now. I want all the world to know my story."



LUSCIOUS Tanya Clayton... the
bait in the Bamboo Prison trap!



COLUMBIA
PICTURES
presents

THE BAMBOO PRISON

starring **ROBERT FRANCIS • DIANNE FOSTER • BRIAN KEITH** with **JEROME COURTLAND**
Screen Play by EDWIN BLUM and JACK DeWITT • Produced by BRYAN FOY • Directed by LEWIS SEILER

Ad Mat No. 301—309 Lines (3 Cols. x 103 Lines)

Official Billing

COLUMBIA PICTURES 25%

presents

THE BAMBOO PRISON 100%

starring

ROBERT FRANCIS • DIANNE FOSTER • BRIAN KEITH 75%

with

Jerome Courtland 25%

Screen Play by EDWIN BLUM and JACK DeWITT 15%

Produced by BRYAN FOY 15%

Directed by LEWIS SEILER 15%

CAST

| | | | |
|----------------------------|------------------|----------------|-----------------|
| Sgt. Bill Rand | Robert Francis | Li Chung | Keye Luke |
| Tanya Clayton | Dianne Foster | Clayton | Murray Matheson |
| Corporal Brady | Brian Keith | Pop | King Donovan |
| Arkansas | Jerome Courtland | Jackie | Dick Jones |
| Father Francis Dolan | E. G. Marshall | Ramirez | Pepe Hern |
| "Doc" Jackson | Earle Hyman | Pike | Leo Gordon |
| Slade | Jack Kelly | Meatball | Weaver Levy |
| Hsai Tung | Richard Loo | Metaxas | George Keymas |
| | | Cockney | Denis Martin |

CREDITS

Screen Play by Edwin Blum, Jack DeWitt; Story by Jack DeWitt; Directed by Lewis Seiler; Assistant Director, Carter DeHaven, Jr.; Director of Photography, Burnett Guffey, A.S.C.; Art Director, Cary Odell; Film Editor, Henry Batista, A.C.E.; Set Decorator, James Crowe; Recording Supervisor, John Livadary; Music Conducted by Mischa Bakaleinikoff; Produced by Bryan Foy. A Columbia Picture.

STORY

(Not for Publication)

U.S. Army Sgt. Bill Rand (Robert Francis) gets special privileges as a prisoner of war collaborating with his captors, winning the enmity of Arkansas (Jerome Courtland) and other American soldiers in the camp. Rand makes a play for Tanya (Dianne Foster), wife of a Communist official whose secrets she reveals to him. Rand and Brady (Brian Keith) both U.S. Intelligence officers, help Tanya escape to the Allied lines. When the prisoner exchange comes, with the armistice, Rand continues his pose as a collaborator and refuses to be exchanged; there is vital information still to be obtained.

(Running Time: 80 Minutes)

G. I. TRAITOR TELLS ALL!

Bares Shock-Filled Story!



In an exclusive interview, Sgt. Bill Rand spoke about his prison camp experiences and said, "It all started the day Tanya

came to camp. One look at her and I knew she'd fit into my plans perfectly. Of course, she turned out to be a little more than I bargained for, but I had a few aces up my sleeve myself."



TANYA...luscious red bait in bamboo prison trap!

COLUMBIA PICTURES presents

THE BAMBOO PRISON

starring ROBERT FRANCIS · DIANNE FOSTER · BRIAN KEITH with JEROME COURTLAND
Screen Play by EDWIN BLUM and JACK DEWITT • Produced by BRYAN FOY • Directed by LEWIS SEILER

Ad Mat 203-- 84 Lines (2 Cols. x 42 Lines)

YANK PRISONER IN CHINA CHOOSSES BAMBOO CURTAIN!

Did Sergeant Fall for Commie Cutie...or Was He Pushed?

Sergeant William Rand, handsome GI who chose life in Red China, talked freely with reporters about his prison camp experiences and especially about beautiful Tanya Clayton..



TRAITOR? Sgt. Wm. Rand still has us guessing. Is he hero or heel?



COLUMBIA PICTURES presents

THE BAMBOO PRISON

starring ROBERT FRANCIS · DIANNE FOSTER · BRIAN KEITH

with JEROME COURTLAND

Screen Play by EDWIN BLUM and JACK DEWITT • Produced by BRYAN FOY • Directed by LEWIS SEILER

Ad Mat 103-- 65 Lines



Mat 1-B; Still No. 161
(Dianne Foster and Robert Francis)

I WAS A PRISONER OF THE CHINESE!

Yank Sgt.
Tells
All!



COLUMBIA PICTURES presents
THE BAMBOO PRISON
starring ROBERT FRANCIS · DIANNE FOSTER · BRIAN KEITH
with JEROME COURTLAND

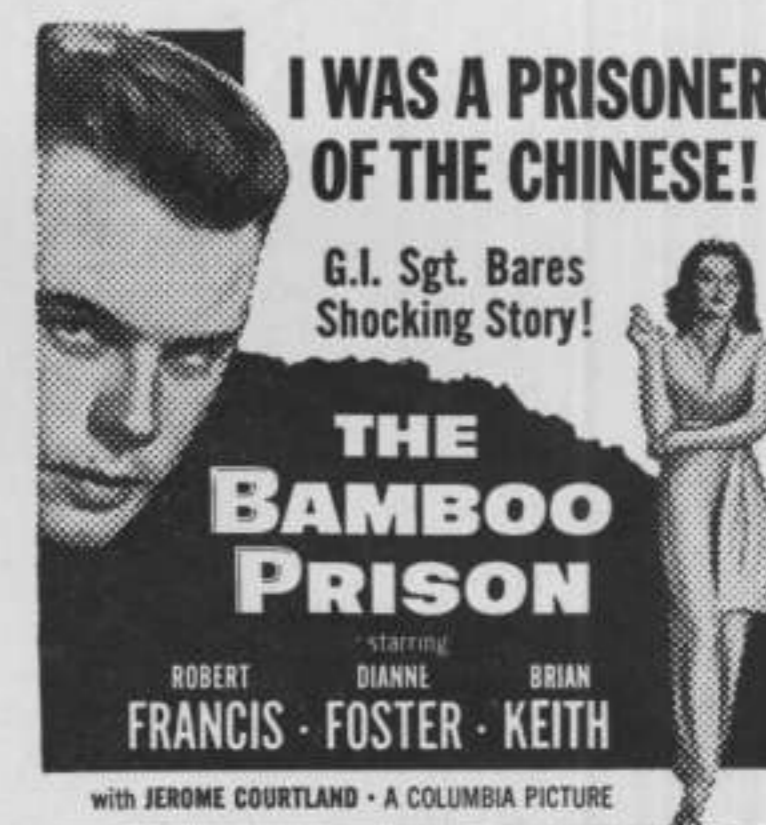
Screen Play by EDWIN BLUM and JACK DEWITT • Produced by BRYAN FOY • Directed by LEWIS SEILER

Ad Mat 201-- 32 Lines (2 Cols. x 16 Lines)



with JEROME COURTLAND
Screen Play by EDWIN BLUM and JACK DEWITT
Produced by BRYAN FOY • Directed by LEWIS SEILER

Ad Mat 101-- 18 Lines



Screen Play by EDWIN BLUM and JACK DEWITT
Produced by BRYAN FOY • Directed by LEWIS SEILER

Ad Mat 102-- 29 Lines



Mat 2-B; Still No. 109 (Robert Francis, Keye Luke and Richard Loo)

YANK PRISONER IN CHINA CHOOSSES BAMBOO CURTAIN!

Accused Traitor Tells All; Bares Shock-Filled Story!



Screen Play by EDWIN BLUM and JACK DEWITT • Produced by BRYAN FOY • Directed by LEWIS SEILER

Ad Mat 202-- 58 Lines (2 Cols. x 29 Lines)

COMPOSITE CAMPAIGN MAT:

Page 6

A complete campaign at the single low price of 35c! Order Special Mat No. 1 from National Screen Service. Individual elements in this composite mat may also be ordered by separate identification numbers at the regular mat prices.

ONLY
35¢



"The Bamboo Prison" Mat 2-A; Still No. 144

INSIDE 'THE BAMBOO PRISON,' Robert Francis tells co-stars Dianne Foster and Brian Keith he chooses to quit freedom, in Columbia's "The Bamboo Prison," at the Theatre.

'Bamboo Prison' Shocker Of GI Turned Traitor

(General Advance)

The whole dramatic behind-the-scenes story of one American GI prisoner of war who decided to remain inside "The Bamboo Prison," is told in Columbia Pictures' motion picture of the same name, coming to the Theatre. Robert Francis, Dianne Foster and Brian Keith are starred in the powerful drama of a life in a prison camp.

Producer Bryan Foy's pictures have always leaned strongly to the topical and this is said to be especially true of "The Bamboo Prison," which reportedly has the impact and immediacy of today's newspaper headlines.

Nearly all of the action of the picture takes place in a Chinese prison camp and so such a camp was erected in the hills of Calabasas, California. The straw-covered barracks, buildings and barbed wire fences were re-created with remarkable fidelity to supply the background for the film's desperate action and GI humor.

"The Bamboo Prison" stars Francis, who will be remembered for his work as the young Naval ensign in "The Caine Mutiny," as the U.S. Army sergeant who betrays his fellow prisoners inside "The Bamboo Prison," Dianne Foster as the wife of a Communist official and Brian Keith as a U.S. intelligence officer. Jerome Courtland is featured in the film as a talkative Southerner. Written for the screen by Edwin Blum and Jack DeWitt, "The Bamboo Prison" was directed by Lewis Seiler for producer Foy.

'Bamboo Prison'

Columbia Pictures' dramatic story of an American war prisoner who betrayed his fellow prisoners, "The Bamboo Prison," opens at the Theatre. Robert Francis, Dianne Foster and Brian Keith are starred and Jerome Courtland is featured. Written for the screen by Edwin Blum and Jack DeWitt, "The Bamboo Prison" was directed by Lewis Seiler and produced by Bryan Foy.

Note!

Two additional publicity mats—one-column Mat 1-B and two-column Mat 2-B—are illustrated on page 6 of this pressbook.

Robert Francis, 'Caine' Discovery, Stars as GI in 'Bamboo Prison'

(Review)

Bryan Foy, the producer noted for his headline-hot motion pictures, has come up with a particularly blazing one for Columbia Pictures in "The Bamboo Prison," which stars Robert Francis, Dianne Foster and Brian Keith at the Theatre. Taking his cue from the dramatic news stories of American GI prisoners who chose to remain with their captors, during the prison exchange, Foy has wrought a powerful movie with tense drama packed into every minute of its breath-taking story.

In "The Bamboo Prison," Francis is known as a collaborator with the enemy and as such is spurned by his fellow GI prisoners of war. But, unknown to the rest of them, Francis is actually a U.S. intelligence officer who, together with Keith, is on a secret mission to obtain valuable information. His official mission is complicated, however, by his emotional involvement with Miss Foster, who plays the wife of a Communist official.

Francis who was so impressive as the young Naval ensign in "The Caine Mutiny" and as the Army doctor in "They Rode West," is excellent as the U.S. Army sergeant who stays with his captors after the armistice. Miss Foster is the beautiful young Canadian actress who is rapidly climbing to stardom in Hollywood and Brian Keith is equally valuable as Francis' fellow prisoner.

The large supporting cast of "The Bamboo Prison" is headed by Jerome Courtland as a Southern GI. The drama was penned for the screen by Edwin Blum and Jack DeWitt. Lewis Seiler directed for producer Foy.

Build 'Prison'

A 160-acre ranch was converted into "The Bamboo Prison" of Columbia Pictures' new shock-drama starring Robert Francis, Dianne Foster and Brian Keith at the Theatre. Twelve cantonment barracks were built, together with an isolation building, called the "ice house" in the script, and all of it surrounded by barbed wire fencing. In addition, the camp has headquarters buildings. Because of the presumed rains, all buildings are raised several feet above the earth. They are of stucco and wood and are thatched with straw for roof.



Mat 1-A; Still No. 139

ROBERT FRANCIS gets ready to use a gun on his captors in "The Bamboo Prison," at the Theatre. Brian Keith, right, and Dianne Foster also star.



"The Bamboo Prison" Mat 2-C; Still No. 42

FELLOW GI's in "THE BAMBOO PRISON" intervene when Brian Keith gets ready to slug co-star Robert Francis in the Columbia picture at the Theatre. Dianne Foster also stars.

Canadian Charmer in 'Bamboo Prison'

Stage experience is most valuable for the young actress, according to Dianne Foster, now starred with Robert Francis and Brian Keith in Columbia Pictures' "The Bamboo Prison," the shock-drama at the Theatre.

Miss Foster, lovely Canadian-born actress who made her mark on the London stage, claims that "three weeks of stage work is better than many months of any other sort of work in any other medium of entertainment."

Miss Foster racked up several years of stage training, in England, including almost a year with Lawrence Olivier and Orson Welles, in "Othello." Welles starred in, and Olivier directed the Shakespearian production.

There is a sort of give and take on the stage during continuous performances, Miss Foster says, that is valuable to the young actress. Neither movies nor television nor radio is capable of giving this sort of training, she feels, because none of them calls for the sustained acting that the stage requires. It's all done in bits and pieces.

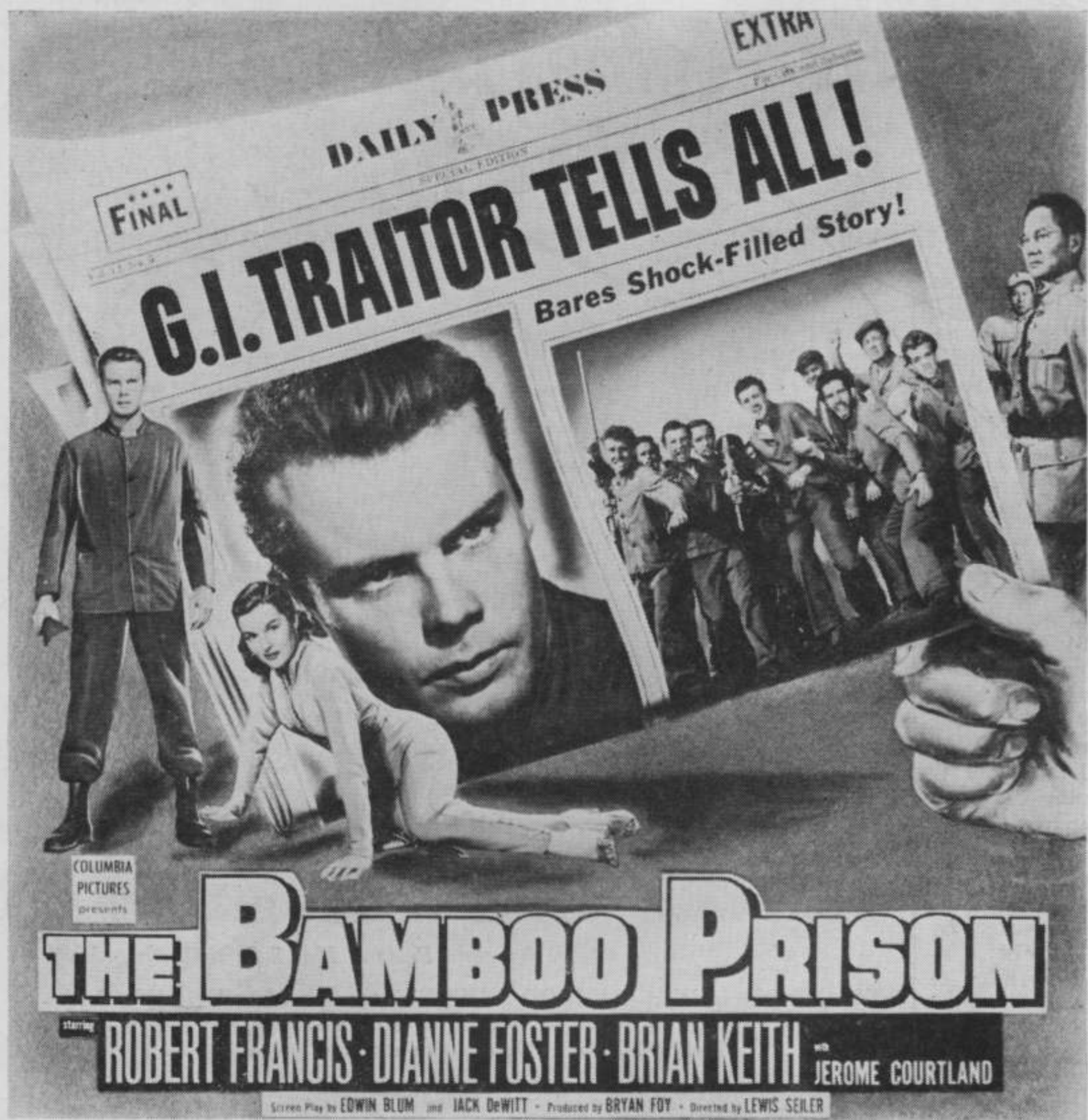
Miss Foster would not claim that the movies have produced no great actresses. Garbo, she points out, is among the greatest ever. But Garbo had genius, she says, whereas most young girls looking for a career in the movies have talent, and it needs both direction and encouragement. Dianne believes the stage is the ideal place to receive these.

Jerome Courtland heads the cast of supporting players in "The Bamboo Prison." The screen play was written by Edwin Blum and Jack DeWitt. The film was directed by Lewis Seiler for producer Bryan Foy.

Still in Uniform

So far in his movie career, Robert Francis hasn't been able to get out of military uniform. His present uniform is a dirty suit of denim for his prisoner of war role in Columbia Pictures' "The Bamboo Prison," now at the Theatre with Dianne Foster and Brian Keith also starred. Former garbs were those of a Navy ensign in "The Caine Mutiny" and of a cavalry doctor in "They Rode West." Incidentally, in his next film, Francis plays a West Point cadet in John Ford's Cinemascope production, "The Long Gray Line."

8p # 37330



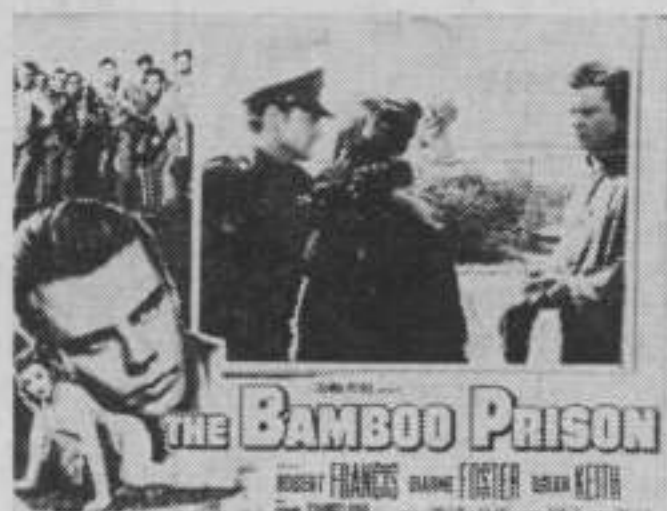
SIX SHEET



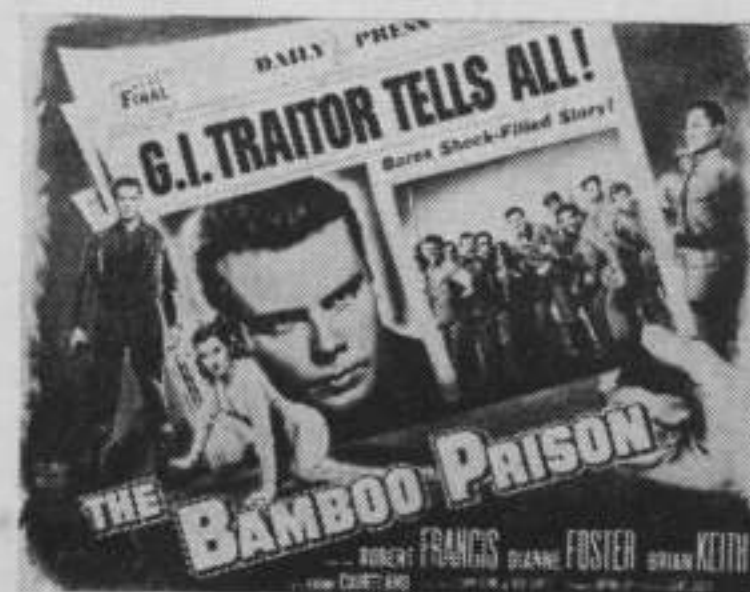
THREE SHEET



ONE SHEET



EIGHT 11 x 14's

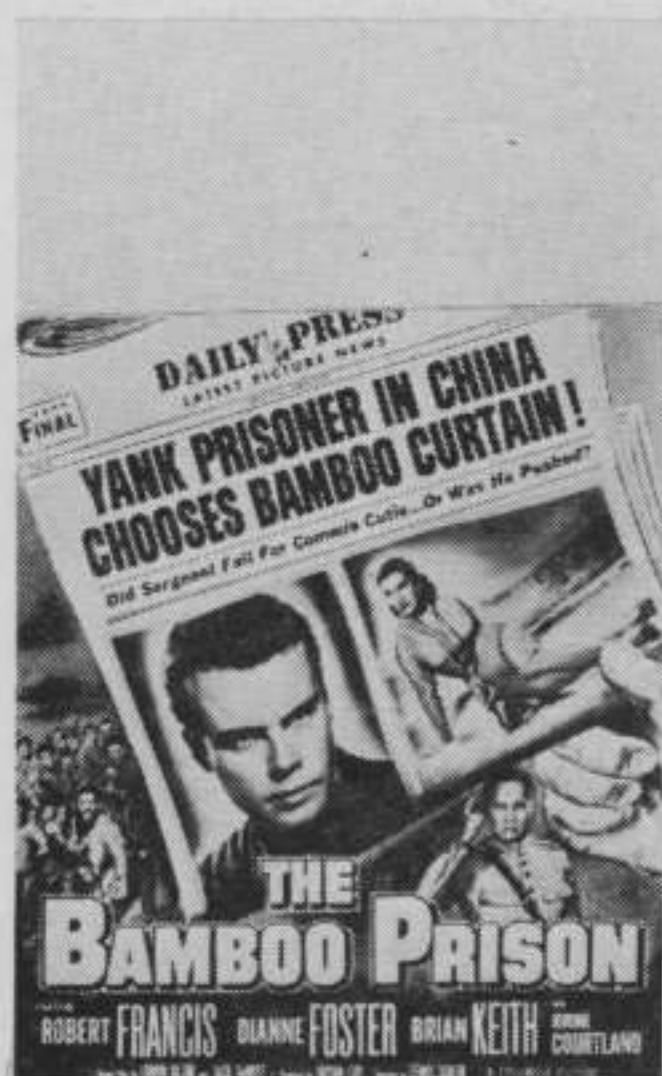


22 x 28
SLIDE (Same Design)



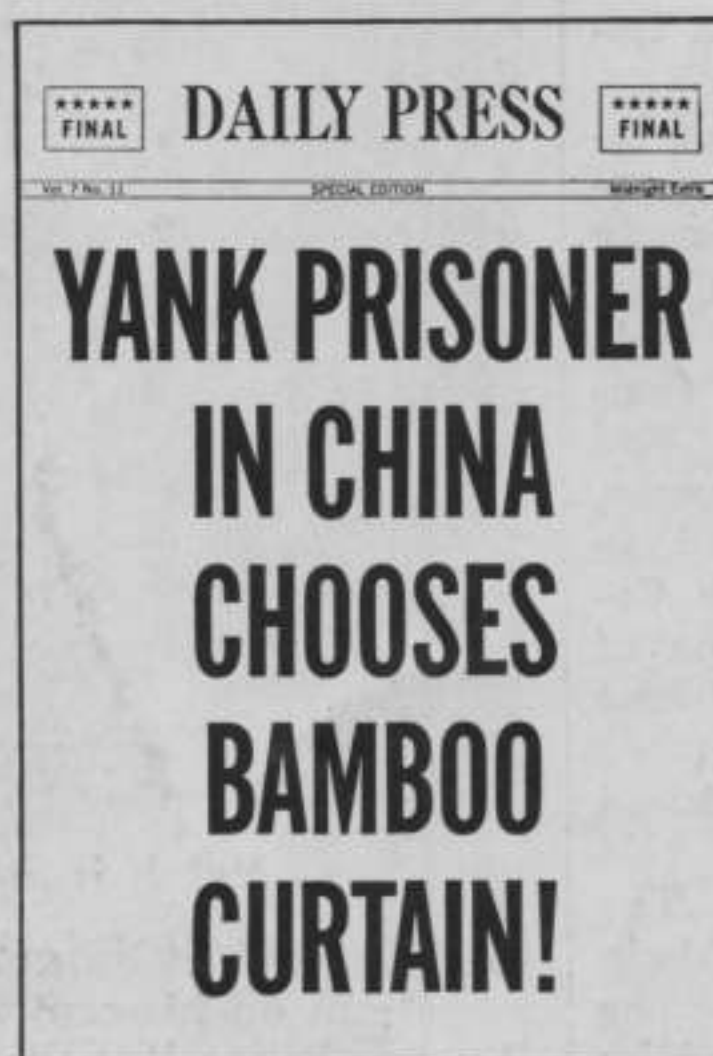
INSERT
CARD

LOBBIES



WINDOW CARD

ORDER ALL
ACCESSORIES, and
30 x 40, 40 x 60,
24 x 60 and
24 x 82 DISPLAYS
FROM NATIONAL
SCREEN SERVICE



9 x 12 FOUR-PAGE HERALD