

Document Citation

Title	The glass tower
Author(s)	
Source	<i>Ellis Films, Inc.</i>
Date	1959
Type	exhibitor manual
Language	English
Pagination	
No. of Pages	2
Subjects	
Film Subjects	Der Gläserne Turm (The glass tower), Braun, Harald, 1957

THE GLASS TOWER

CAST

Katja Fleming	LILLI PALMER
Robert Fleming	O. E. HASSE
John Lawrence	PETER VAN EYCK
Dr. Bruening	BRIGITTE HORNEY
Dr. Krell	HANS MESSEMER
Blume	LUDWIG LINKMANN
Staatsanwalt	GERD BRUDERN
Gerichts-President	HINTZ FABRICIUS
Mrs. Wiedecke	ELSE EHSE
Wendland	WERNER STOCK
Policeman	EWALD WENCK
Schwester Margarethe	GABY FEHLING

CREDITS

Producing Company	BAVARIA-FILMKUNST AG
Director	HARALD BRAUN
Music	WERNER EISBRENNER
Photography	FRIEDL BEHN-GRUND
Scenery	WALTER HAAG
Costumes	URSULA MAES
Book	ODO KROHMANN WOLFGANG KOEPPEN

German Version Running Time: 104 minutes
English Version Running Time: 92 minutes

An Ellis Films Release
An Essex Universal Film Presentation

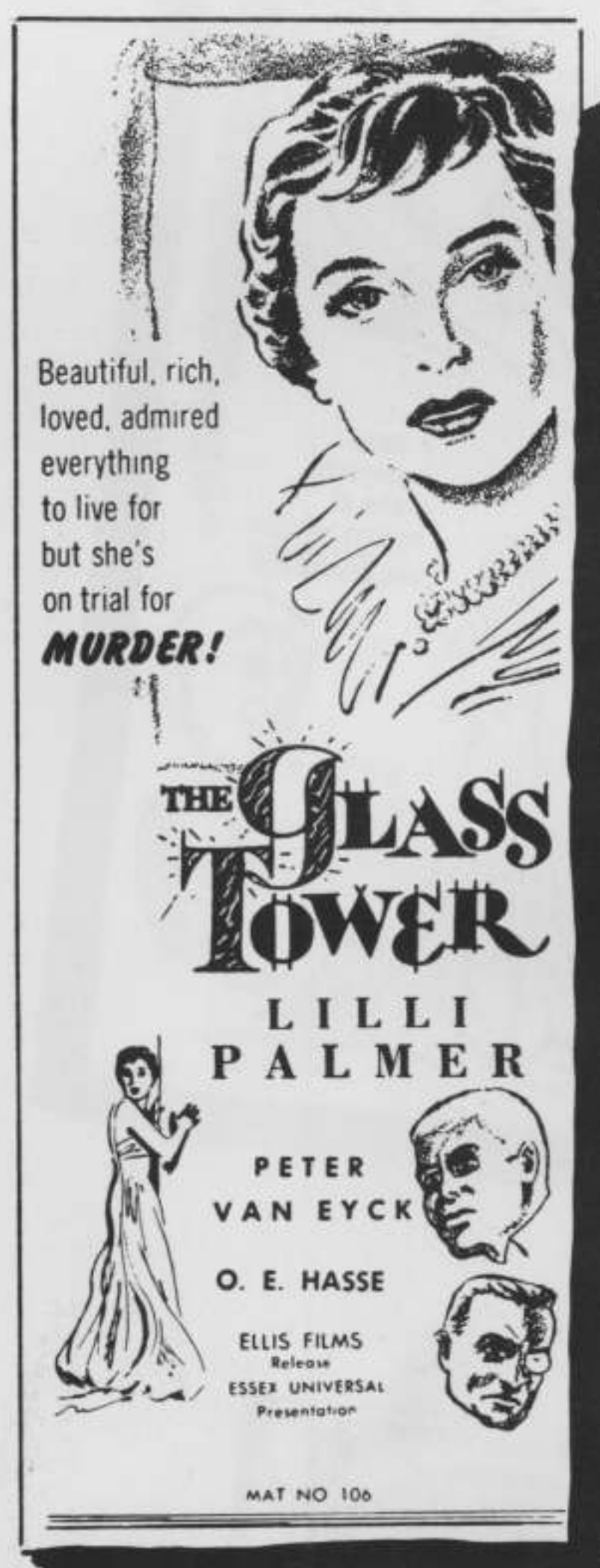
AVAILABLE IN ENGLISH
AND IN GERMAN WITH SUB-TITLES

Playwright John Lawrence (Peter Van Eyck) returns from America and tries to locate the actress Katja Fleming (Lilli Palmer). He finds her almost imprisoned in a "Glass Tower", not a fit home for a woman such as this one-time celebrated address. This "Tower" is not a house for happy people, but used for business contacts, agreements and as proof of super-efficiency. Twenty stories high, another Tower of Babel, built as a monument to success by Robert Fleming (O.E. Hasse), a man who knows only glory, richness and luxury. In this tower of glass he has placed Katja to keep her not only in pomp and circumstance but also under guard. For Robert Fleming his wife Katja is expensive property, the confirmation of his success, efficiency and power.

But while building his tower, he forgets the fragility of human happiness. And so John Lawrence enters Katja's life, seeking her to play the lead in his latest play. This invitation to the woman in the glass tower, becomes the door to freedom from her prison. Robert Fleming returns from a business trip and finds his wife, contrary to her promise, again at rehearsal. He finds her with one step out of the glass prison, ready to be herself again. In doing so she begins to free herself from the domination of her husband and to find love for John Lawrence, the man who forced her to make the step.

John Lawrence, who wanted only the actress Katja for his play, finds in their mutual work, that he is in love with the woman. Robert Fleming, however, does not give up so easily. His vanity is hurt and while still living under one roof, he and Katja are forced to disregard respect and hurt one another to the point that Robert Fleming finds out that his wife never really loved him. Even his humility, shown for the first time to Katja, comes too late for she already belongs to the other man.

The lost Katja is for Robert Fleming like a declaration of bankruptcy. If he cannot have her anymore, he must destroy her and thus he plans not only to kill Katja but John and himself. The plot fails, Robert Fleming is the only victim and the District Attorney finds that Katja is the murderess. Only Katja's lawyer Dr. Bruening (Brigitte Horney) and John Lawrence are persistent enough to question the District Attorney's findings, and when a tape recording which a psychiatrist has made of Katja is found stolen and hidden in the house of the late Robert Fleming, the truth prevails and the glass prison opens forever to unite Katja and John.



ACCESSORIES

- TRAILER
- ONE SHEET IN COLOR
- 40 x 60 BLOWUP
 - 11x14's
 - 22x28's
- STILLS
- MATS
- PRESS SHEETS

DON VELDE
1475 BROADWAY
NEW YORK CITY

ELLIS FILMS, INC.

SUITE 2108-2109

TEL. : LO 3-5457

PARAMOUNT BUILDING — 1501 BROADWAY, N. Y. C.



Beautiful, rich,
loved, admired ...
everything
to live for ...
but she's
on trial for
MURDER!

LILLI PALMER

THE GLASS TOWER

MAT NO. 307

A clever,
suspenseful
drama of
mystery, intrigue
and **DEATH!**

PETER VAN EYCK
O. E. HASSE

ELLIS FILMS
Release
ESSEX UNIVERSAL
Presentation



A clever,
suspenseful
drama of
mystery, intrigue
and **DEATH!**

LILLI PALMER

THE GLASS TOWER

PETER VAN EYCK
O. E. HASSE

ELLIS FILMS
Release
ESSEX UNIVERSAL
Presentation

MAT NO 107



LILLI PALMER

Beautiful, rich,
loved, admired ...
everything
to live for ...
but she's
on trial for
MURDER!

THE GLASS TOWER

Mat No. 209

PETER VAN EYCK · O. E. HASSE
ELLIS FILMS Release ESSEX UNIVERSAL Presentation

AMERICAN PREMIERE TODAY **72 ST** **PLAYHOUSE** AIR CONDITIONED
bet. 1st & 2nd Aves. BU 8-9304



Beautiful, rich,
loved, admired ...
everything
to live for ...
but she's
on trial for
MURDER!

LILLI PALMER

THE GLASS TOWER

MAT NO. 207

A clever,
suspenseful
drama of
mystery, intrigue
and **DEATH!**

PETER VAN EYCK
O. E. HASSE

ELLIS FILMS
Release
ESSEX UNIVERSAL
Presentation

"THE PRODUCTION AND ACTING ARE SUPERIOR!"
— Crowther, N. Y. Times

"THE CLIMAX HOLDS PLENTY OF SURPRISES! First-rate performances!"
— Gleason, Herald Tribune

"EFFICIENT, INTELLIGENT AND SURPRISING! Well acted and directed with cold precision. Mounts to a courtroom climax!"
— Winsten, N. Y. Post



THE GLASS TOWER

LILLI PALMER

AIR COND **72 ST** **PLAYHOUSE** bet. 1st & 2nd Aves. BU 8-9304
Mat No. 210



LILLI PALMER

THE GLASS TOWER

PETER VAN EYCK **O. E. HASSE**

ELLIS FILMS
Release
ESSEX UNIVERSAL
Presentation

MAT NO 208

A clever,
suspenseful
drama of
mystery, intrigue
and **DEATH!**



Beautiful, rich,
loved, admired ...
everything
to live for ...
but she's
on trial for
MURDER!

THE GLASS TOWER

LILLI PALMER
PETER VAN EYCK **O. E. HASSE**

ELLIS FILMS Release ESSEX UNIVERSAL Presentation

MAT NO 206