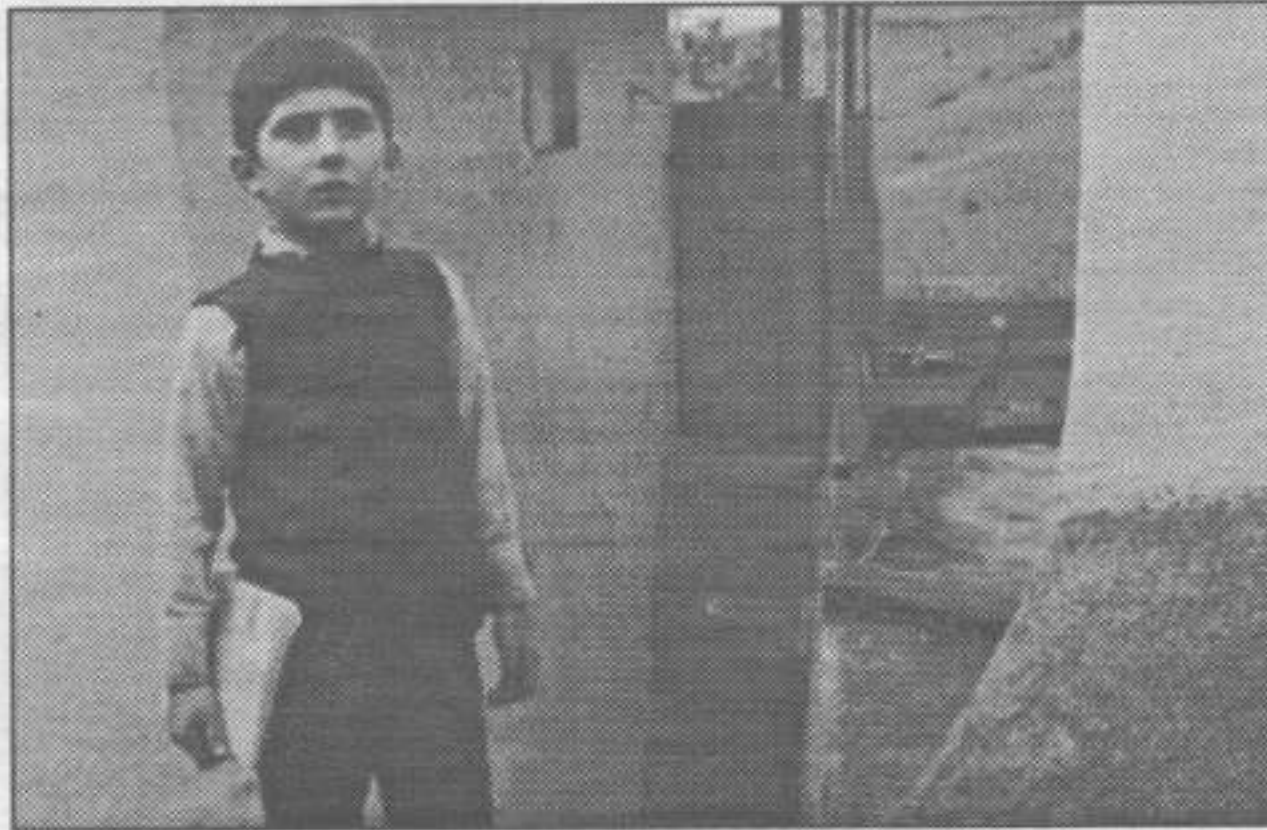


## Document Citation

Title	<b>Where is the friend's home?</b>
Author(s)	
Source	<i>San Francisco International Film Festival</i>
Date	1993 May 01
Type	program note
Language	English
Pagination	
No. of Pages	1
Subjects	
Film Subjects	Khaneh-ye doost kojast? (Where is the friend's home?), Kiarostami, Abbas, 1987

1993



5/1  
12:15 KAB  
5/2  
4:30 PFA  
5/6  
1:30 KAB

## Where Is the Friend's Home?

*Khane-ye dost kojast?*

IRAN 1987, 90 min.

DIR/SCR Abbas Kiarostami

PROD Alireza Zarrin CAM Farhad Saba

ED Kiarostami CAST Babak Ahmadpour, Ahmad

Ahmadpour, Khodabakhsh Defaie, Iran Otari

PRINT Farabi Cinema Foundation

Inspired by Iranian philosopher Sohrab Sepehri's poem, *Where Is the Friend's Home?* is a sensitive portrait of a child's life in a northern Iranian village. Director Abbas Kiarostami (*Close Up*, SFIFF 1991) creates young characters who are sophisticated and aware, constantly developing their sense of moral priorities. The adults, caught up in the daily routines of village life, are unwitting and frustrating obstacles. The story centers on Ahmad and his friend, Mohammad, whose disinterest in his homework has provoked threats of expulsion from the village school. When Ahmad discovers that he has taken home Mohammad's notebook by mistake, he must return it, out of concern that his friend will be expelled if he cannot properly do his assignment. Defying his parents, Ahmad sets out just before dusk to search out his friend's home in the neighboring village.

Constantly derailed and misguided by conflicting directions from adults, he searches fruitlessly through winding alleys and houses that all look identical. Kiarostami draws subtle and convincing performances out of his cast of non-professional actors, conveying Ahmed's unwavering concern for his friend and his mounting frustration with sophistication and compassion. In his newest film, *As Life Goes On* (also in this year's Festival), Kiarostami documents his return to this region after it was devastated by an earthquake.