

Document Citation

Title	William Faulkner's Sanctuary
Author(s)	
Source	<i>Twentieth Century-Fox Film Corporation</i>
Date	c1961
Type	exhibitor manual
Language	English
Pagination	
No. of Pages	12
Subjects	Remick, Lee (1935-1991), Quincy, Massachusetts, United States Odetta (1930), Birmingham, Alabama, United States Dillman, Bradford (1930), San Francisco, California, United States Montand, Yves (1921-1991), Monsummano Alto, Italy
Film Subjects	Sanctuary, Richardson, Tony, 1961

EXHIBITOR'S CAMPAIGN MANUAL

CAST

Temple	Lee Remick
Candy	Yves Montand
Gowan	Bradford Dillman
Ira Bobbitt	Harry Townes
Nancy	Odetta
Governor	Howard St. John
Norma	Jean Carson
Miss Reba	Reta Shaw
Dog Boy	Strother Martin
Lee	William Mims
Flossie	Marge Redmond
Swede	Jean Bartel
Mamie	Hope Du Bois
Jackie	Enid Janes
Connie	Dana Lorenson
Cora	Pamela Raymond
Randy	Linden Chiles
Gus	Robert Gothie
Tommy	Wyatt Cooper

Distributed through
20th Century-Fox

From the depths of degradation she rose to seek redemption at the hands of the woman her silence had condemned to the gallows... this is the story of Temple Drake and Candy Man, her Creole lover... of Gowan, her husband, and their children... the one who lived, and the one who died; of her father, the Governor of a great state... and of Nancy, the woman who laid down her life to save them all.



Darryl F. Zanuck Productions, Inc. presents A CinemaScope Picture

WILLIAM FAULKNER'S SANCTUARY

LEE REMICK · YVES MONTAND · BRADFORD DILLMAN

Produced by Richard D. Zanuck Directed by Tony Richardson Screenplay by James Poe

S I G

160 lines x 4 cols. (640 lines)
4 cols. x 11 3/4 inches
ALSO AVAILABLE:
197 lines x 5 cols. (985 lines)
5 cols. x 14 1/4 inches

MAT-404

SYNOPSIS

(Not for Publication)

try the truth...

It is a Temple six years younger now whom Gowan takes to a country club dance.

The car crashes at high speed into a fallen log across the road, and there they encounter Dog Boy (STRATHER MARTIN), a lookout with a shotgun cradled across his knees. He yanks a wire and stops their horn from blowing, and leads them to the illicit liquor establishment nearby. Candy (YVES MONTAND) the Cajun who seems to be in charge, hands Gowan a jar of clear liquor, and Gowan upends it to drink deeply as Temple pleads to borrow a car or be allowed to ride into town on the liquor trunk she sees being loaded.

Nancy brings Candy coffee, and with Gowan now out cold leads Temple to a bedroom in the farmhouse. "You can stay here," Nancy tells Temple, "but they ain't no lock on the door," adding, "these aren't little college boys; they'll be like dogs after you."

Lee (WILLIAMS MIMS), who owns the place, is the first to pay Temple a visit. When he persists, she throws a liquor bottle at him, and is running from him across the room when Candy enters, gives Lee a look, and leaves after him. Nancy returns to tell Temple it's time she get out of there. As she runs in terror through the woods, Temple encounters Dog Boy again, and he hides her in a rat-infested corn crib—to which soon afterward Candy

knowingly follows her as the others take the drunken Gowan into town on a load of liquor.

Still in a state of shock and next morning after Candy has had his way with her, Temple accompanies Candy and Nancy into New Orleans, where Candy finds her a room upstairs in Miss Reba's (RITA SHAW) tawdry establishment. While she sleeps, Candy sends her a set of black lace teddies with red garters, patent leather pumps and a kewpie doll. She is delighted with the gawdy new raiment, and phones the house mother at her sorority where the contrived story that she has been missing because her father (the Governor) has had a mild attack; and adds that if a certain Mr. Gowan Stevens calls she doesn't want to see or hear from him again. She obviously likes her new role of being kept by Candy, and she giggles as she sips the gin that has come on her breakfast tray.

Candy brings her a sleek black dress, and he is taking her out to a speakeasy frequented by gangsters and good citizens alike. Liking this exciting new life, Temple orders double gins and is head-over-heels for Candy.

Candy and Dog Boy are driving Temple's repaired car on a country road, with a rumble seat full of liquor. A bullet spatters through their windshield. The car flips over and explodes. One of the Prohibition agents says the eulogy: "Candy boy, you've had it!" Still upstairs at Miss Reba's Temple

sobs as she reads the headline: "Bootlegger Slain in Fiery Crash." The place is raided by city police and all the girls led out. Two state police escort Temple back to the Governor's mansion, and as Temple melts into her father's arms she can't help but think: "The return of the innocent, the ravaged maiden..."

It is now again the "present," of 1932. Watched silently by the anxious Ira Bobbitt, Temple is telling all to her father. "Of course it was a scandal, but you hushed it, Daddy. The girl who stood in your arms couldn't weep" (but) "was screaming under skin for her first, last, lost lover... would it have made us any closer then if I had walked in and said, 'Oops, Daddy, I'm home from ten glorious days in a den of iniquity and loved every minute of it?'"

Gowan had married her right after her return from the stay at Miss Reba's, loving her and at the same time feeling responsible for what had happened to her, even though she told him she hadn't been forced to do what she did. Gowan got a job with the State, and they had had Bucky (KIM HECTOR) and the infant they had lost.

It was while doing social work at a state narcotics hospital that Temple found Nancy again, and took her home as servant and child nurse. Nancy became a spectator in the Stevens home where every time the light social chitchat would turn to the

subject of fancy houses or the like, Gowan would look at Temple and force a change of subject.

Nancy warned Temple that she was fixin' to mess up her life again, and one day Gowan walked in on Temple and Nancy reminiscing about Candy and Miss Reba's. Becoming aware of Nancy's past as a dope addict; sometime convict and reformed prostitute, Gowan insisted that Temple get rid of her. But Temple replied, "If she goes, so do I," adding, "It is snarl, isn't it? You can't stand me as I am, and I can't be what I am not."

One night on her way to her home in the Negro section of the city, Nancy encounters Candy in a dark place. Nancy phones a mysterious summons to Temple, who comes at once—to see Candy! It was Dog Boy, not Candy, who was killed at the wheel of the wrecked car.

The Governor and Bobbitt are both shocked at the extent and candor of Temple's account—to which she adds that when she went home the next morning, Nancy was waiting but Gowan had gone with Bucky.

Temple pleads to leave, too. Candy comes to take her, and Nancy goes to feed the baby. "You fixin' to take him," Nancy asks Temple, "or to leave him here? You knew I'd have to take him, didn't you?" But Temple says she intends taking the baby herself. But a few minutes later when Nancy walks out of the nursery as a sleepwalker in a trance, Temple walks in and screams. The baby is dead.

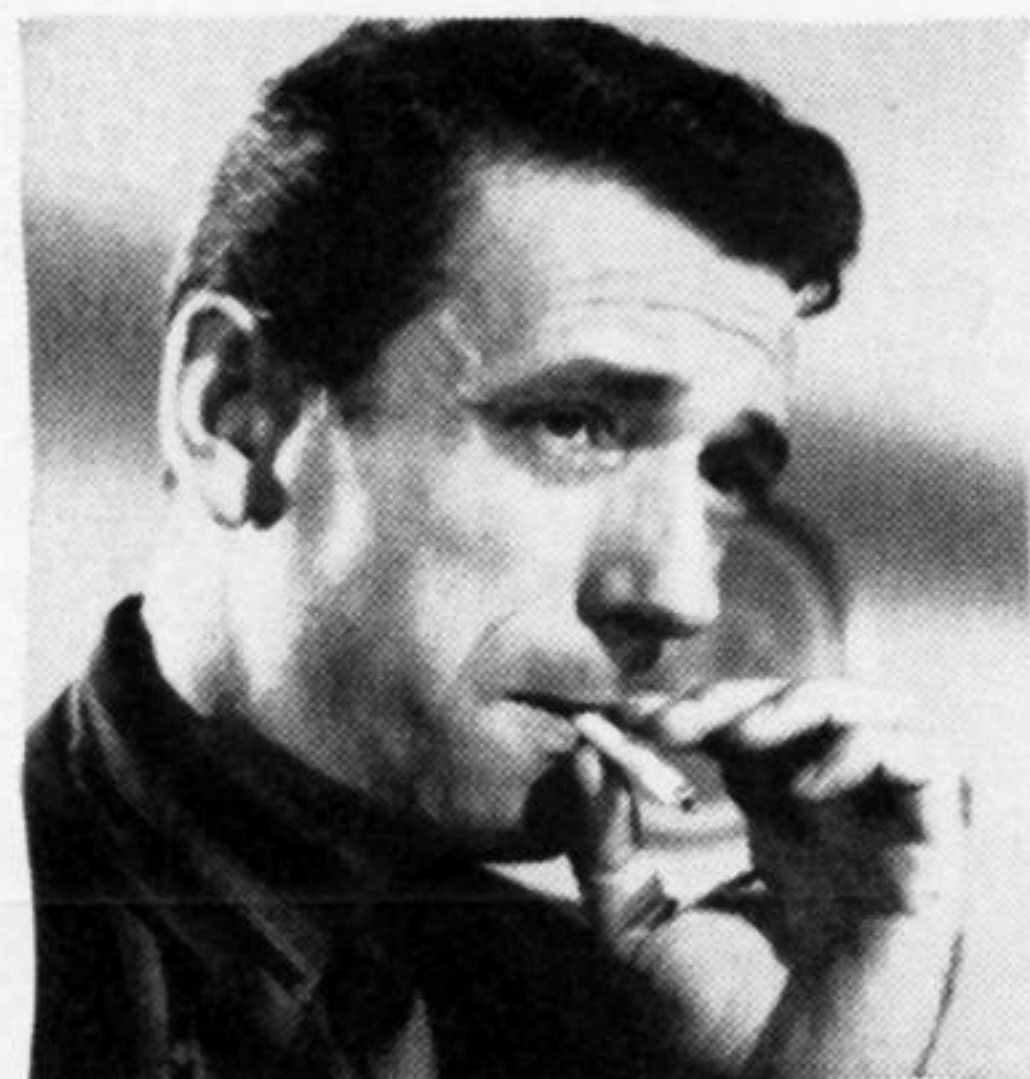
Temple pleads with the Governor to pardon Nancy, he says he cannot. Temple goes to pay Nancy a last visit. Nancy has arrived at a spiritual peace with the world. She is soon to be reunited with her own baby she lost to illness.

CREDITS

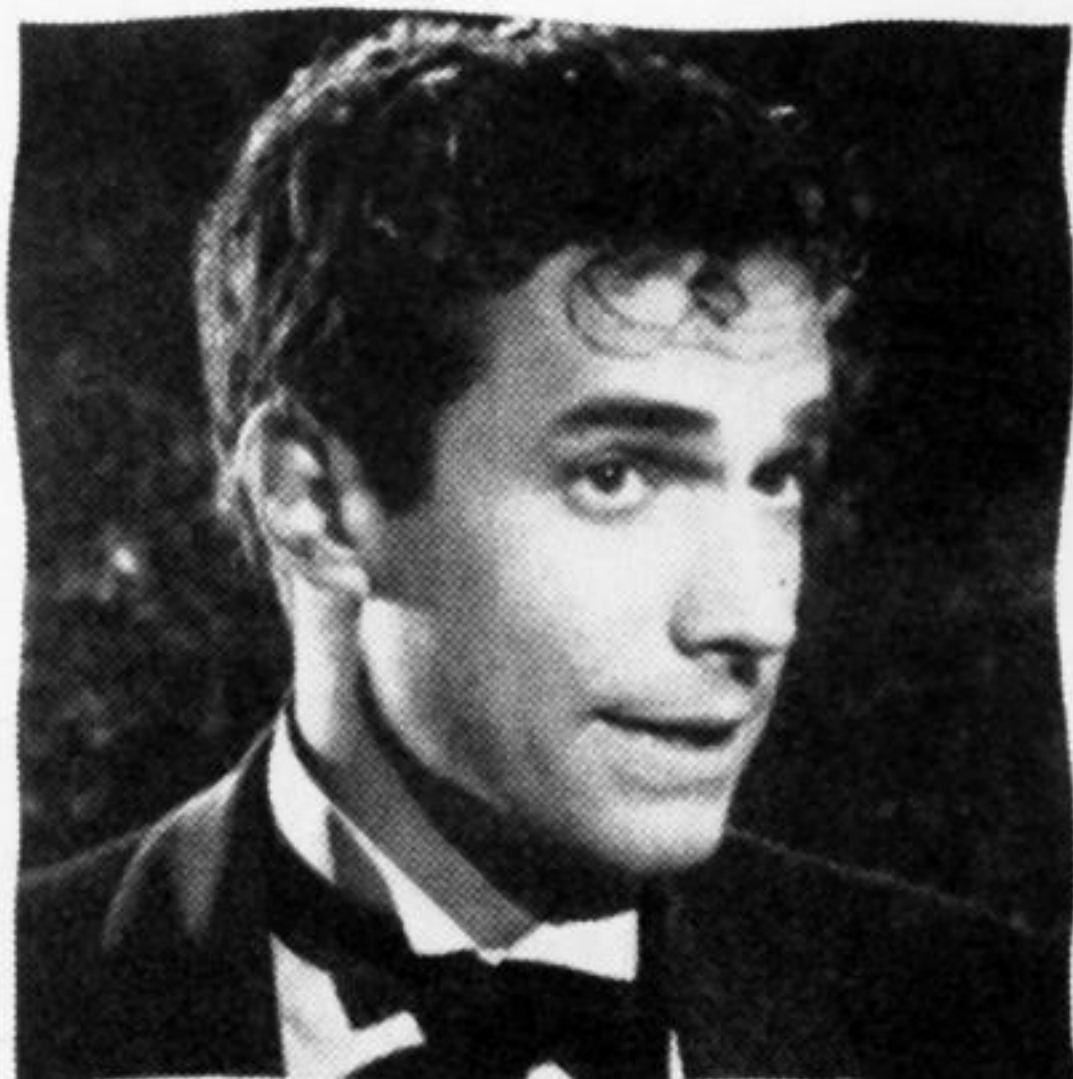
Produced by	Richard D. Zanuck
Directed by	Tony Richardson
Screenplay by	James Poe
Based on novels and a play by	William Faulkner
Adapted for the stage by	Ruth Ford
Presented by the Theatre Guild, Myers and Fleischmann	
Music by	Alex North
Director of Photography	Ellsworth Fredricks, A.S.C.
Art Direction	Duncan Cramer Jack Martin Smith
Set Decorations	Walter M. Scott Fred Maclean
Film Editor	Robert Simpson, A.C.E.
Costumes Designed by	Don Feld
Make up	Ben Nye
Hair styles by	Helen Turpin, C.H.S.
Assistant Director	David Hall
Sound	Charles Peck Harold A. Root
Orchestration	Edward B. Powell

THIS IS THE STORY OF TEMPLE DRAKE

...who sank into degradation and rose to seek redemption at the hands of the woman her silence had condemned to the gallows...



...of CANDY MAN, her Creole lover, who first lit the fires that smouldered within her and taught her the ways of evil...



...of GOWAN, her husband, whose weakness nearly destroyed them all, who had to learn to face the truth that alone could set them free...



...of GOVERNOR DRAKE, her father, who had never heard the truth from his daughter, and when at last he did, it was too late...



...and of NANCY, who laid down her life that those who lived might find salvation.

Darryl F. Zanuck Productions, Inc. presents A CinemaScope Picture

WILLIAM FAULKNER'S **SANCTUARY**

LEE REMICK · YVES MONTAND · BRADFORD DILLMAN

Produced by Richard D. Zanuck Directed by Tony Richardson Screenplay by James Poe

S I G

155 lines x 4 cols. (620 lines)
4 cols. x 11 1/16 inches

MAT—403

"THE SERPENT BEGUILLED ME, AND I DID EAT"

GENESIS III, 13



Seared by the fires of her desperate desires, tormented by the new-found emotions within her... she rose from degradation to find, at last, redemption at the hands of the woman her silence had condemned to the gallows.

—From the great American novel that won the world's acclaim and its author the Nobel Prize for literature.

Darryl F. Zanuck Productions, Inc. presents

WILLIAM FAULKNER'S

SANCTUARY

A CinemaScope Picture

LEE REMICK
YVES MONTAND
BRADFORD DILLMAN

Produced by Richard D. Zanuck

Directed by Tony Richardson

Screenplay by James Poe

S I G

ALSO AVAILABLE:
189 lines x 5 cols. (944 lines)
5 cols. x 13 1/2 inches

AND

118 lines x 3 cols. (354 lines)
3 cols. x 8 1/2 inches

153 lines x 4 cols. (672 lines)
4 cols. x 10 1/8 inches

MAT—401

THIS IS THE STORY OF TEMPLE DRAKE

...who sank into degradation and rose to seek redemption at the hands of the woman her silence had condemned to the gallows...



...of CANDY MAN, her Creole lover, who first lit the fires that smouldered within her and taught her the ways of evil...



...of GOWAN, her husband, whose weakness nearly destroyed them all, who had to learn to face the truth that alone could set them free...



...of GOVERNOR DRAKE, her father, who had never heard the truth from his daughter, and when at last he did, it was too late...



...and of NANCY, who laid down her life that those who lived might find salvation.

Darryl F. Zanuck Productions, Inc. presents A CinemaScope Picture

WILLIAM FAULKNER'S SANCTUARY

LEE REMICK · YVES MONTAND · BRADFORD DILLMAN

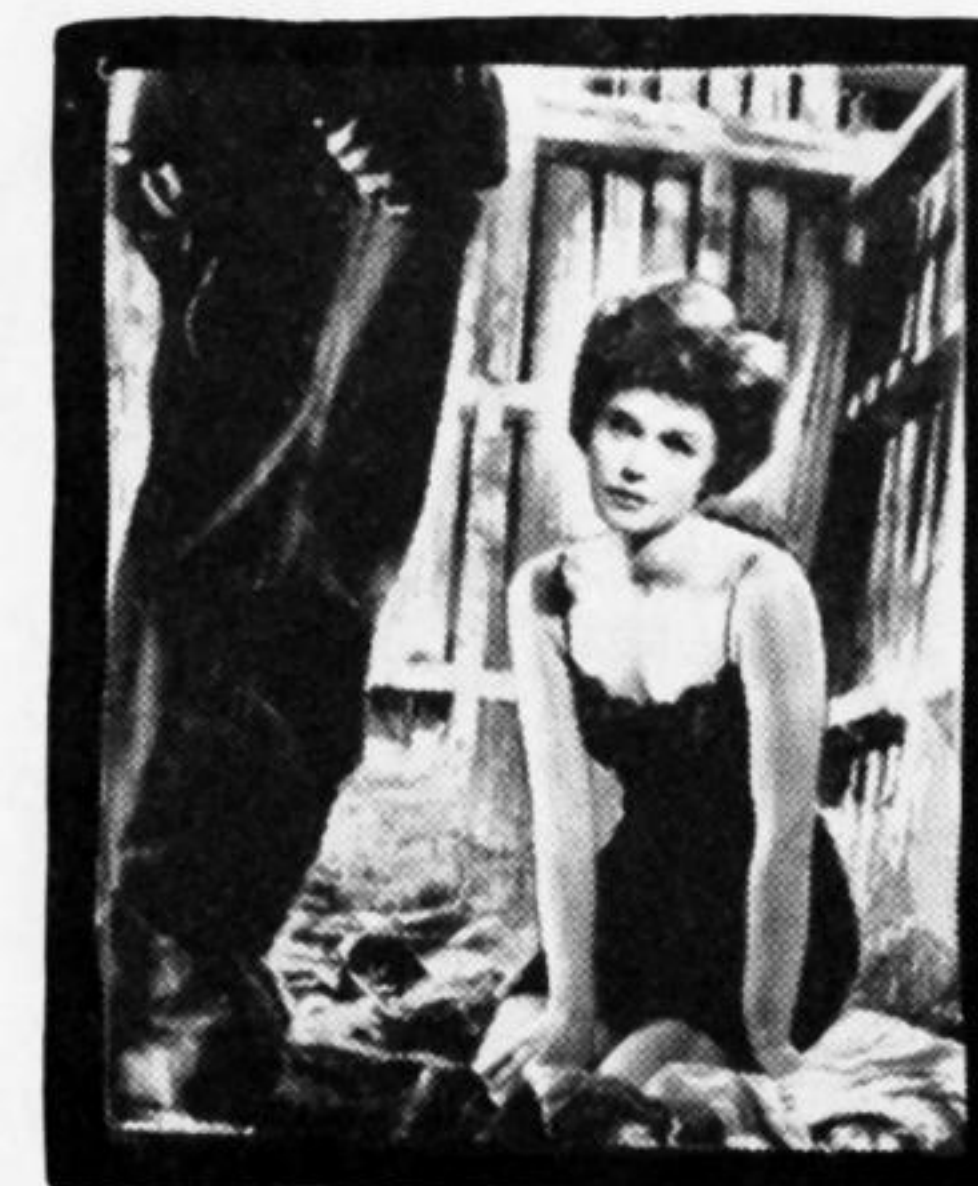
Produced by Richard D. Zanuck Directed by Tony Richardson Screenplay by James Poe

S I G

155 lines x 4 cols. (620 lines)
4 cols. x 11 1/4 inches

MAT—402

The story of Temple Drake...who sank into degradation and rose to seek redemption at the hands of the woman her silence had condemned to the gallows!



"He that is without sin among you let him first cast a stone at her."

John VIII, 7

WILLIAM FAULKNER'S

SANCTUARY

starring LEE REMICK · YVES MONTAND · BRADFORD DILLMAN

Produced by RICHARD D. ZANUCK · TONY RICHARDSON · JAMES POE Directed by Screenplay by Presented by Darryl F. Zanuck Productions, Inc. CINEMASCOPE 20th CENTURY FOX



Candy, her Creole lover, who first lit the fires that smouldered within her!

The weakness in Gowan, her husband, almost destroyed everyone of them!

Governor Drake, her respectable father, learned the truth about her too late!

Nancy, who laid down her life that those who lived might find salvation!

S I G

149 lines x 4 cols. (596 lines)
4 cols. x 10 3/4 inches

MAT—405

SOON YOU WILL SEE

SANCTUARY



...A STRANGE AND BEAUTIFUL
MOMENT OF TRUTH AMID THE HALF-TRUTHS
OF OUR TIME...FOR IT TELLS OF A WOMAN'S
DEGRADATION AND REDEMPTION...AND
BURROWS DEEP INTO THE DARK AND DESPERATE
DESIRES THAT THRASH WILDLY IN THE
HUMAN HEART...IT EVOKES A MOOD THAT
IS MUSKY WITH THE URGES OF THE FLESH...
FOR IN THE LIVING AND QUIVERING FIBRE
OF EACH OF US THERE IS THE SECRET CRY
FOR A DEMON LOVER...THE LAST, LOST AND
LONELY LOVER WHO WANDERS SOMEWHERE IN
A WASTED WORLD...AND WHOM ONLY A
HAUNTED AND TORMENTED FEW MAY EVER
ENCOUNTER...AS HAPPENED BY CHANCE AND
BY FORCE ON THAT FATEFUL NIGHT
IN LOUISIANA—TO TEMPLE DRAKE!



Darryl F. Zanuck Productions, Inc. presents
WILLIAM FAULKNER'S SANCTUARY starring **LEE REMICK · YVES MONTAND · BRADFORD DILLMAN**
Produced by **RICHARD D. ZANUCK** · Directed by **TONY RICHARDSON** · Screenplay by **JAMES POE** · Released by **20th CENTURY-FOX**

S I G

170 lines x 4 cols. (680 lines)
4 cols. x 128 inches

MAT—408

SEE SPECIAL DOOR-PANELS
IN
ADVERTISING SUPPLEMENT

FROM THE DEPTHS
OF DEGRADATION
SHE ROSE TO SEEK
REDEMPTION
AT THE HANDS OF
THE WOMAN
HER SILENCE
HAD CONDEMNED
TO THE GALLOWS!



Darryl F. Zanuck Productions, Inc. presents
WILLIAM FAULKNER'S SANCTUARY
A CinemaScope Picture

starring
**Lee REMICK
Yves MONTAND
Bradford DILLMAN**
Produced by Richard D. Zanuck
Directed by Tony Richardson
Screenplay by James Poe

S I G

MAT—110

138 lines x 1 col.
1 col. x 9 3/4 inches



Produced by **RICHARD D. ZANUCK** · Directed by **TONY RICHARDSON** · Screenplay by **JAMES POE**

S I G

MAT—205

115 lines x 2 cols. (230 lines)
2 cols. x 8 1/4 inches

Darryl F. Zanuck Productions, Inc. Presents

WILLIAM FAULKNER'S

SANCTUARY



FROM THE DEPTHS
OF DEGRADATION
SHE ROSE TO SEEK
REDEMPTION AT
THE HANDS OF THE
WOMAN HER
SILENCE HAD
CONDEMNED
TO THE
GALLOWS!

*The serpent
beguiled me,
and I did eat"*

GENESIS III, 13



CANDY...the Creole lover
who first lit the fires that
smouldered within her.

GOWAN...the weak husband
who had to learn to face
the awful truth about her.

NANCY...who laid down her
life that all those who lived
might find their salvation.

STARRING

LEE REMICK · YVES MONTAND · BRADFORD DILLMAN

S I G

Produced by

RICHARD D. ZANUCK

Directed by

TONY RICHARDSON

Screenplay by

JAMES POE



CINEMASCOPE

MAT—406

134 lines x 4 cols. (536 lines)
4 cols. x 9 3/4 inches

THE TRUTH ABOUT
TEMPLE DRAKE...
HER SIN—
AND HER REDEMPTION!

"THE
SERPENT
BEGUILED
ME.
AND I
DID EAT"
GENESIS III, 13



The story of
the governor's
daughter...
her Creole
lover,
Candy...and
the woman
who laid
down her
life to save
them all!



Darryl F. Zanuck Productions, Inc. presents A CinemaScope Picture

WILLIAM FAULKNER'S SANCTUARY

starring
Lee REMICK · Yves MONTAND · Bradford DILLMAN
Produced by Richard D. Zanuck Directed by Tony Richardson Screenplay by James Poe

S I G

100 lines x 2 col. (200 lines)
2 col. x 7 inches

MAT—207

THE TRUTH ABOUT
TEMPLE DRAKE...
HER SIN—
AND HER
REDEMPTION!



Darryl F. Zanuck Productions, Inc. presents
WILLIAM FAULKNER'S SANCTUARY
A CinemaScope Picture

starring
Lee REMICK · Yves MONTAND · Bradford DILLMAN
Produced by Richard D. Zanuck Directed by Tony Richardson Screenplay by James Poe

S I G

56 lines x 2 col. (112 lines)
2 col. x 4 inches

MAT—204

Darryl F. Zanuck Productions, Inc. presents
WILLIAM FAULKNER'S SANCTUARY

starring
Lee REMICK · Yves MONTAND · Bradford DILLMAN
Produced by Richard D. Zanuck Directed by Tony Richardson Screenplay by James Poe



MAT—202

28 lines x 2 col. (56 lines)
2 col. x 2 inches



LEE REMICK · YVES MONTAND

MAT 2C



LEE REMICK

MAT 1A

WILLIAM FAULKNER'S
SANCTUARY
A CinemaScope Picture

1 col. x 1 1/2 inch

MAT—103



WILLIAM FAULKNER'S
SANCTUARY
From the Nobel Prize Winner...the Story of Temple Drake...and her Creole lover, Candy!

starring
Lee REMICK · Yves MONTAND · Bradford DILLMAN
A CinemaScope Picture
Produced by Darryl F. Zanuck
Productions, Inc.

70 lines x 1 col.
1 col. x 5 inches

MAT—105



14 lines x 2 col. (28 lines) 2 col. x 1 inch

MAT—201



6 lines x 2 col. (12 lines) 2 cols. x 1/2 inch

MAT—206



21 lines x 1 col.
1 col. x 1 1/2 inches

MAT—102



1 col. x 1 inch
14 lines x 1 col.

MAT—101

SPECIAL AD MAT No. 1 — ORDER NSS

PUBLICITY



Yves Montand with some of his light-virtued companions in "Sanctuary," 20th Century-Fox CinemaScope drama based on the William Faulkner story of the licentious 1920's, opening . . . at the . . . Theatre with Lee Remick and Bradford Dillman. Mat 2D

Yves Montand in Stark Cajun Role Portrays Bootlegger-Profligate

Yves Montand as "Candy" in William Faulkner's "Sanctuary," 20th Century-Fox CinemaScope release, starring Lee Remick and Bradford Dillman, opening . . . at the . . . Theatre, is one of the decade's most touted performers.

Yves, like all great entertainers, is a living paradox, a walking contradiction of all the human complexities. He takes himself lightly, his work seriously. He presents to the world the face of a clown, but hides the heart of a poet. When he does his enormously popular one-man show, he dresses in brown slacks and a shirt of the same color, open at the neck, without tie. On the street he looks what he is, one of the ten best-dressed men anywhere. He is known as France's No. 1 actor-singer of the day, though he was born in Italy. He is the idol of Paris, but he grew up on the dock-sides of Marseilles. He is first a man and then an actor.

Montand was born in Monsummano, near Milan on October 13th, 1921, youngest child of a peasant family. At the age of two the family fled from the excesses of Mussolini. The next twenty years of his life were spent eking out a precarious living in the tough harbor district of Marseilles. When he was eleven, he went to work as a waiter. He has been a barman, a factory hand and even a hair-dresser's assistant.

Montand made his real debut as an actor at the Alcazar in Marseilles. He was eighteen and it was a long hard journey. He sang in small music halls and suburban cinemas. When there were no engagements he worked on the docks as a longshoreman. Meanwhile he was developing a style.

Arriving in Paris in June, 1944, Montand secured a booking at the ABC, a popular music hall. He augmented his income by doubling up in nightclubs. Edith Piaf heard him and encouraged him to develop an act.

In 1945 he made his film debut in Piaf's "Etoile Sans Lumiere" and the following year starred in Marcel Carne's, "Les Portes de la Nuit." Since then he has made many films.

While touring in 1949 he met beautiful Simone Signoret, now Academy Award winner, and married her.

Yves was an instantaneous hit in New York with his one-man show at the Henry Miller Theatre, a success he echoed again and again as he toured this country.

It was Marilyn Monroe who suggested to Jerry Wald, the producer of "Let's Make Love," that he use Yves Montand as her leading-man. Since then, Wald and audiences everywhere have cause to thank Marilyn for her excellent casting.



Bradford Dillman and Lee Remick cut up with the joyous abandon of youth in the 1920's, in "Sanctuary," 20th Century-Fox CinemaScope version of the William Faulkner plot also starring Yves Montand and opening . . . at the . . . Theatre. Mat 2A

"SANCTUARY" DRAMA OF PASSION

Bradford Dillman As Serious Husband

Bradford Dillman, who plays Gowan Stevens, husband of the heroine in the powerful drama "Sanctuary," 20th Century-Fox CinemaScope release, starring Lee Remick and Yves Montand, is a graduate of Hell's Kitchen, Yale University and the San Francisco mansion owned by his father, a Resident Partner of Merrill, Lynch, Pierce, Fenner and Smith. The film opens . . . at the . . . Theatre.

Twentieth Century-Fox has this young, determined man under long-term contract for three reasons—his strong and winning personality, his open-faced good looks, and his acting successes. Critics were unanimous in praising his interpretation of Tyrone (Eugene O'Neill) in the smash Broadway hit "Long Day's Journey Into Night." His appearances in "Compulsion," "Crack in the Mirror," and "Circle of Deception," all Twentieth Century-Fox productions made a strong impact on public opinion.

In 1952 Brad enlisted in the United States Marines. He trained at Parris Island, then was selected for Officers School at Quantico, Virginia. He was discharged after the Korean war as a First Lieutenant.

Joining a summer theatre at Santa Barbara, California, he quickly got back into the swing of theatre. Then, off to New York City and an off-Broadway troupe. He began to get a few small television parts. In June, 1955, he met aspiring young actress Frieda Harding. One year later they were married.

Romance brought good fortune to Brad. He was accepted for training at The Actors Studio and he won important leads on TV. On Broadway he played in "Inherit the Wind" and "Third Person." Then, along came "Long Day's Journey Into Night." When the final curtain went down Brad was standing behind it with a 20th Century-Fox contract in his hand.

Noted Folk Singer In Role of Murderess

Noted Negro folk singer and actress, Odetta, portrays the tragic murderess, Nancy, in William Faulkner's "Sanctuary," which Richard Zanuck has produced for Darryl F. Zanuck Productions, a 20th Century-Fox CinemaScope DeLuxe Color release, opening . . . at the . . . Theatre, starring Lee Remick, Yves Montand and Bradford Dillman.

Odetta portrays with wisdom and power the devoted servant who goes berserk and kills Lee Remick's child, thus distilling the viciousness of her life and pointing out the need and hope of salvation.

A protege of Harry Belafonte, Odetta has appeared on "An Evening with Belafonte" and other major television shows. She is a well-known night-club performer.

Odetta was born in Birmingham, Alabama, and is one of the few actual natives appearing in this drama of the Deep South.

SHORT TAKES

William Faulkner's strictly Deep South drama "Sanctuary," 20th Century-Fox CinemaScope DeLuxe Color presentation opening . . . at the . . . Theatre, is a Northern-controlled offering. The film's British director Tony Richardson is from Lancashire in the NORTHWEST section of England. Male lead Yves Montand, resides in Paris, in NORTHERN France. Lee Remick hails from Boston, Mass., and, Bradford Dillman is from San Francisco—both well NORTH of the Mason-Dixon Line.

The "NORTHERN" influence is elsewhere, too. Scenes in some cases were filmed in the King barn on the Studio's "NORTH Forty" backlot, and the chickens that provide atmosphere in the barn scenes are all New Hampshire Reds.

William Faulkner Tale of Licentious 1920's Stars Remick, Yves Montand, Brad Dillman

(Newspaper Advance)

The fast-living, tragic, hard-drinking rebellion of American youth during the 1920's is brought to the screen with realism and suspense in "Sanctuary," 20th Century-Fox CinemaScope version of two best-selling novels by William Faulkner, opening . . . at the . . . Theatre with Lee Remick, Yves Montand and Bradford Dillman in stellar leads.



Bradford Dillman and Lee Remick as excitement-seeking youth of the 1920's star in "Sanctuary," 20th Century-Fox CinemaScope drama based on a William Faulkner plot, opening . . . at the . . . Theatre with Yves Montand. Mat 2B

Lee Remick Hits Dramatic Peak As Flapper of Roaring '20's"

Meet Lee Remick, the Last of the Wanton Women. (Her last.)

The highly inflammatory "Sanctuary," 20th Century-Fox CinemaScope release, opening . . . at the . . . Theatre, with Yves Montand and Bradford Dillman, climaxes for star Lee Remick her unswerving film career as a girl of somewhat easy virtue.

Miss Remick's previous roles amount to schoolgirl stuff compared to the rigors of her hot romancing with Yves Montand in "Sanctuary."

As a Mississippi Governor's flapper daughter who falls prey to the wiles of bootlegger Yves Montand, loves him flagrantly and then tries to atone, she gives a dramatic performance of unusual dimension.

Torrid Scenes

Miss Remick is likely to arouse a bit of controversy as a result of the torrid love scenes in this film. A highly-charged scene in a corn crib with Yves Montand, her affair with Bradford Dillman, the envelope chemise in which she jaunts about a house of ill-repute, her submissiveness to Yves Montand even after she has married Bradford Dillman, her casual deceptions, are a few of the conversation pieces. She is as coy a temptress as has been seen in some time.

But, Lee is not restricted to being just a temptress. She exhibits great flexibility and range in her dynamic scenes with noted folk-singer Odetta who plays a murderess seeking Lee's salvation. The weaknesses and strengths of both actresses are pointed up by their differences in age and by the deep identification of each with the other. Their strange bond is touching and penetrating.

Miss Remick, in her screen debut played a high-school drum majorette in "A Face in the Crowd" evidencing a lively inter-

Here is the deep South as Faulkner delights in exposing it: the "proper" communities riddled with moral decay, the "first families" behind whose veneer of social prestige some dark and startling shame exists. This story, combining the plots of "Sanctuary" and "Requiem for a Nun," deals with the correct household of the Governor of Mississippi (Howard St. John), whose cherished and properly married daughter Temple Drake (Lee Remick) makes an astonishing confession to him one night before the execution of a household servant for the murder of Temple's baby. In a desperate last-minute attempt to save the life of the negress (Odetta), the Governor's daughter exposes her own guilty past, her secret headlong affair with an underworld kingpin named Candy (Yves Montand) and the real reasons why the maddened servant felt that the infant would be better off dead. Unfolded in tense and violent flash-back, interpreted by a superb cast, the story makes one of the memorable dramatic experiences of the current film season.

As the excitement-seeking flapper who never quite gets over her violent involvement with the "Candy Man," Lee Remick delivers an unforgettable performance sustaining all her earlier promise as a dramatic actress of profound and sensitive gifts.

Yves Montand, as "Candy," the vice-ridden Cajun peddler of illicit liquor and illicit love, is persuasive, passionate and dangerous, in love with Temple yet ready to exploit her naivete and her youthful instability. This role is a far cry from his impish casting as the billionaire in the recent "Let's Make Love" and will certainly boost the Montand legend of versatility.

Bradford Dillman, who plays the part of Temple's guilt-ridden young husband, is an actor of assorted talents.

Notable in the cast is the great brooding personality of Odetta, an actress of wisdom, range and power, who brings to the part of the negro murderess a quality of integrity that will not soon be forgotten.

Produced by Richard Zanuck and directed by Tony Richardson, "Sanctuary" is dramatic entertainment that captures the full flavor of the decadent "roaring 20's" in a region of America that William Faulkner has made superbly his own.



A tense courtroom scene from "Sanctuary," 20th Century-Fox CinemaScope version of the William Faulkner story, brings Bradford Dillman and Lee Remick face to face with the murderess of their child. Also starring Yves Montand, the film opens . . . at the . . . Theatre. Mat 2E

HIGH-VOLTAGE PROMOTION PITCH SELLS "SANCTUARY"

DRAMATIC IMPACT IN TV-TRAILERS

You'll have your local saturation ready-made when you arrange with your TV station to schedule these high-tension trailers for "Sanctuary." This exploitation plus, available in one 60, one 20, and one 10-second spot, carries plenty of voltage and is the perfect selling punch you need to bring out your audience, especially the female sector. Capsule moments from this drama of conflict, illicit love and immorality in the South of the 1920's, will be "naturals" as box-office magnets to men and women alike. Big-name stars like Lee Remick, Yves Montand, and Bradford Dillman carry the message with unusual persuasive power. Join in this all-out television sales onslaught. Order your trailers FREE from:

**TV-RADIO DEPARTMENT
TWENTIETH CENTURY-FOX
444 West 56th Street
New York 19, N. Y.**

SEVEN RADIO-PLUGS PUSH SALES

Seven radio spots offered for your playdate campaign on "Sanctuary" are the kind of sure-sell plugs which bring box-office results. Consisting of two 60's, two 30's, two 20's, and one 10-second spot — these are dialogue excerpts taken direct from the soundtrack of "Sanctuary" and featuring all the stars in scenes from the William Faulkner story of the South of the licentious 1920's. Use these unique spots at key times during your radio day, particularly in the early morning and afternoon rush hour periods and as breaks for important d.j. programs. Order FREE from:

**TV-RADIO DEPARTMENT
TWENTIETH CENTURY-FOX
444 West 56th Street
New York 19, N. Y.**

EXPLOITATION "EXTRAS" BOOST "SANCTUARY" BOX-OFFICE

BIG BOOKING: "Sanctuary" is one of the celebrated modern classics of regional manners and mores in the South of the roaring '20s. Take advantage of the built-in appeal that the William Faulkner name carries with the general public, and the prestige value of any film based on the work of a Pulitzer-and-Nobel Prize winning author. Tie-in with your local book stores to feature window displays of both "Sanctuary" and "Requiem for a Nun," since the 20th Century-Fox CinemaScope production now featuring Lee Remick, Yves Montand and Bradford Dillman is based on an amalgam of both best-selling novels.

BOOKMARK GIVEAWAY . . . Print book-marks with the name of "Sanctuary," 20th Century-Fox CinemaScope release starring Lee Remick, Yves Montand, Bradford Dillman, based on two best-selling novels by the celebrated American author William Faulkner. Give away these book-marks on the opening night of your theatre-run.

ROUND TABLE . . . Arrange a round-table book discussion on your local radio station, inviting a local librarian, English teacher, writer, college student, civic leader, to discuss William Faulkner as an interpreter of the American scene, and "Sanctuary" as a piece of Americana typical of the 1920's in this country.

WEAR-RIGHT . . . Tie-in with your local women's-wear shops to feature Lee Remick gowns and lingerie during the playdates of "Sanctuary" at your theatre. Invite them to create novel window-displays using some of the dramatic stills of Lee Remick from the 20th Century-Fox CinemaScope film, and the window-cards and other display items available for advertising.

MONTAND MUSIC . . . Yves Montand, one of France's most popular stars, has recorded superb LP albums of songs. Using stills from "Sanctuary," you can arrange for music-store window-displays of Montand in connection with promotion of some of his best-loved recordings.

TELOPS TELL CAPSULE FAULKNER STORY

The startling impact of "Sanctuary" on theatre-goers is capsuled in these Telops, keyed to the passions of this exposé of youthful rebellion in high Southern society during the roaring 1920's. Gear your TV campaign to the ladies, enticing them with this revelation of loose-standards and daring experimentation among the "flappers" of a by-gone generation, and the profound and magnificent acting of Lee Remick, Yves Montand and Bradford Dillman. Definitely an exploitation "plus!"

1. To be used in conjunction with Station I.D.



Announcer (live) All the buried hungers and experimental rebellion of youth in the lush era of boot-legging, speak-easies and social rebellion are here in unforgettable drama, as the classic William Faulkner best-seller comes to the screen with Lee Remick, Yves Montand and Bradford Dillman living out their conflicts in the 20th Century-Fox CinemaScope production you will not soon forget. See "Sanctuary" beginning at the Theatre.

2. Not to be used in conjunction with Station I.D.



Announcer (live). Just a quiet Southern town, until its hidden shame exploded into the light of day. Nobody knew what lay behind the murder of the Governor's infant grandson, nobody except the maddened servant who had committed the crime, and the Governor's cherished daughter who deserved what happened to her baby! See Lee Remick, Yves Montand and Bradford Dillman in this stunning exposé of decaying morals among the youth of the roaring 1920's, as 20th-Century-Fox brings the American classic "Sanctuary" to the screen in CinemaScope opening at the Theatre.

- Specify whether you want the "Shared I.D." or "General" slides or telops.
- Say whether it's slides or telops you want. This is up to your station's contact; let him decide.
- If you order the "Shared I.D.," include the call-letters of the station involved, to be incorporated. This is essential!
- Specify the title of the film—"Sanctuary."

Order From:

**QQ TITLE CARD CO.
247 WEST 46th STREET
NEW YORK, N. Y.**

With Theatre Playdate and Station Identification Information (Be Sure to Send All Information)\$6.00

Without Theatre Playdate and Station Identification\$5.00

Each Duplicate Copy of Any Slide or Telop\$2.50

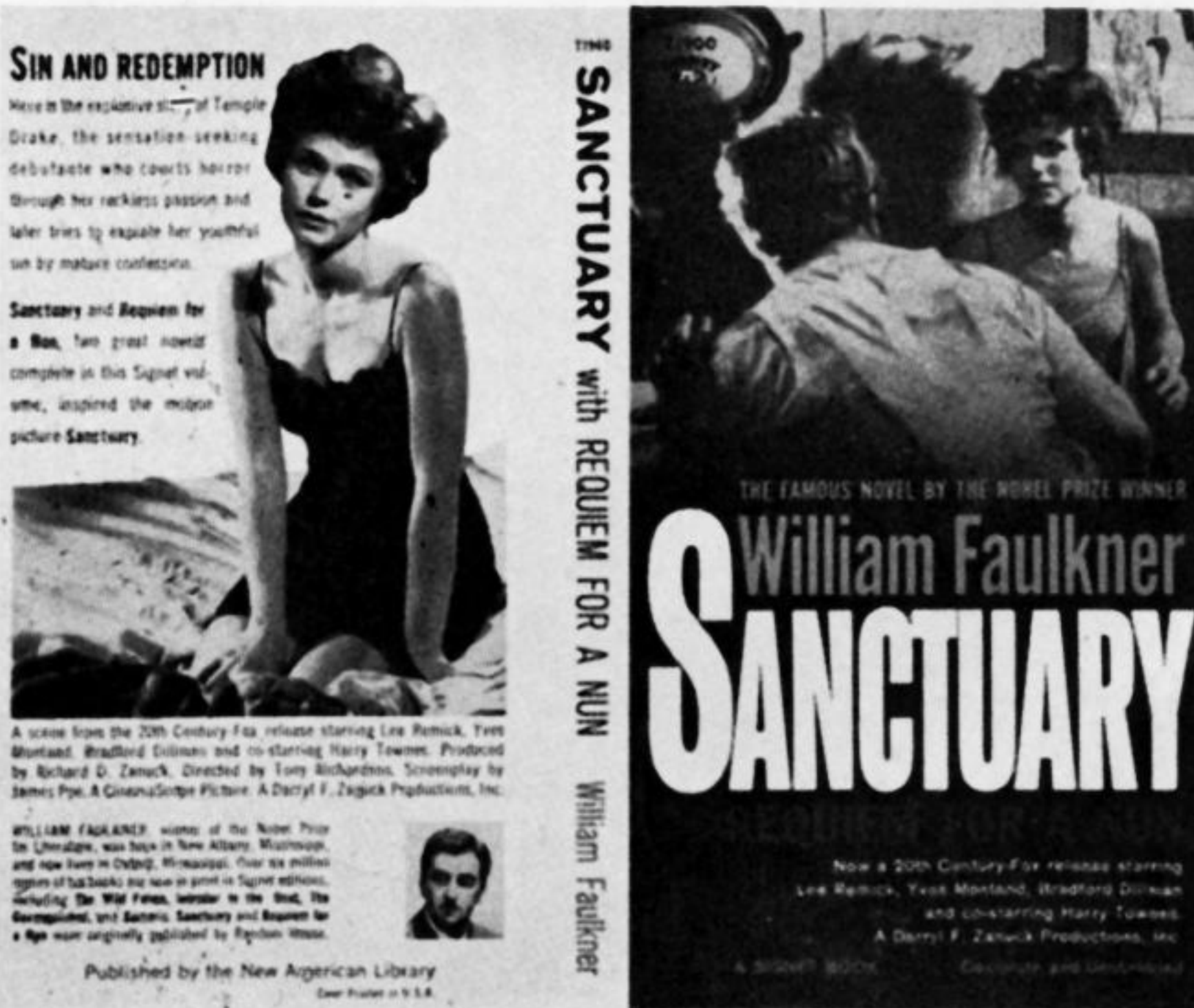
THESE ARE NOT FURNISHED FREE BY TWENTIETH CENTURY-FOX

SIGNET PAPERBACKS REACH 200,000 ON "SANCTUARY"

Signet Books, a division of the New American Library in a dramatic tie-in with the national release of the 20th Century-Fox CinemaScope drama, "Sanctuary," based on two best-selling novels of William Faulkner, has begun its all-out push on an initial printing of 200,000 copies of this powerful American story. The book gives cover credit to the film and to its top-name stars, Lee Remick, Yves Montand, Bradford Dillman. Signet is driving hard to spread the soft-cover seventy-five-cent motion picture edition, fanning out across the nation in strategic outlets, including variety and chain stores, bus, air, rail terminals and book shops. The natural interest of the general public in this amalgam of Faulkner's earlier "Sancutary" and more recent "Requiem

for a Nun," is a plus in your sales campaign. As a winner of both Pulitzer and Nobel Prizes, Faulkner has the kind of reader-appeal that is built-in, and Signet, which has already published more than 2,000,000 copies of Faulkner in hard-back and paper-back, knows the sales

value of this literary giant's name. You and your local release sources can work together in connection with your theatre playdates of "Sanctuary," using book-displays in the lobby of your theatre, and book promotion like theatre-program sales.



Posters and Accessories



24-SHEET



14 x 36 INSERT



1-SHEET



3-SHEET



6-SHEET



22 x 28 PHOTO



14 x 22 WINDOW CARD

ALSO AVAILABLE
11x14's • 8x10 B/W STILLS
SLIDE • STANDEE
ORDER: NSS

Satin
Accessories
•
Available
Badge
Streamer
Sectional Valance

In Canada:
Represented by
Nat'l Flag & Display Co.
THEATRE POSTER
SERVICE LTD.
227 Victoria St.
Toronto, Ont., Canada

Order directly
from:
NATIONAL FLAG
AND DISPLAY CO.
43 West 21st St.
N. Y. 10, N. Y.
ORegon 5-5230

SPECIAL POSTERS



40 x 60

ORDER
NSS



30 x 40



40 x 60

ADVERTISING SUPPLEMENT

**THE HUSHED TRUTH ABOUT
THE GOVERNOR'S DAUGHTER
...AND WHAT HAPPENED THAT
NIGHT SHE WENT LOOKING
FOR "KICKS"-- IN A SHORT,
RED FRINGE DRESS...**



Darryl F. Zanuck Productions, Inc.
presents
WILLIAM FAULKNER'S

Sanctuary

CINEMASCOPE

**Was she as innocent as she said...or did she
taunt and tease — until it was too late?**

S I G

20th
CENTURY-FOX

Produced by
RICHARD D. ZANUCK · TONY RICHARDSON · JAMES POE

starring LEE REMICK
YVES MONTAND
BRADFORD DILLMAN

Directed by
Screenplay by
TONY RICHARDSON · JAMES POE

Ad Mat No. 410

**ALSO AVAILABLE:
MAT 304**

133 lines x 3 columns (399 lines)
3 columns x 9½ inches

MAT 209

84 lines x 2 columns (168 lines)
2 columns x 6 inches

175 lines x 4 columns (700 lines)
4 columns x 12½ inches

IS THIS THE GOVERNOR'S WELL-BRED DAUGHTER... THE PERFECT LADY-UNTIL SHE'S AWAY FROM HOME?

The Hushed
Truth About
Temple
Drake...
And What
Happened
The Night
She Went
Looking For
"Kicks"—In
A Short,
Red
Fringe
Dress!



"I'm
married
now...but
nothing's
changed
between
us!"



"Stay
away
from that
man! He'll
have you
crawlin'...
beggin'!"



"How
many
times do
I have to
tell you
I wasn't
forced!"



Darryl F. Zanuck Productions, Inc.
presents
WILLIAM
FAULKNER'S

Sanctuary

CINEMASCOPE

20th
CENTURY-FOX

Produced by
RICHARD D. ZANUCK • TONY RICHARDSON • JAMES POE

Directed by
TONY RICHARDSON • JAMES POE

Screenplay by

S I G



LEE
REMICK
YVES
MONTAND
BRADFORD
DILLMAN

Mat 409

126 lines x 4 columns (504 lines)
4 columns x 9 inches

ADDITIONAL ADVERTISING PROVOCATIVE DOOR PANELS



From the depths of degradation she rose to seek redemption at the hands of the woman her silence had condemned to the gallows... this is the story of Temple Drake and Candy Man, her Creole lover... of Gowan, her husband, and their children... the one who lived, and the one who died; of her father, the Governor of a great state... and of Nancy, the woman who laid down her life to save them all.



ALSO AVAILABLE SATIN ACCESSORIES

SECTIONAL VALANCE — Use in inner lobby and under marquee. Price \$1.50 per running foot. Order the length you require; minimum order 10 feet.

SPECIAL 3-PIECE STREAMER — Size: 15'. Special 3-piece "SANCTUARY" Streamer. Price \$15.00 each.

USHER'S BADGE
Dress House staff
in these badges.
Price 40c ea.

Order directly from: NATIONAL FLAG AND DISPLAY CO.
43 West 21st Street, N. Y. 10, N. Y. ORegon 5-5230

In Canada: Nat'l Flag & Display Co. Represented by THEATRE
POSTER SERVICE LTD., 227 Victoria St., Toronto, Ont., Canada

TEASER ADVERTISING



WILLIAM FAULKNER'S
SANCTUARY
starring
LEE REMICK • YVES MONTAND • BRADFORD DILLMAN
A Darryl F. Zanuck Productions, Inc.
CINEMASCOPE
RELEASED BY 20th CENTURY-FOX
S I G

97 lines x 2 cols. (194 lines)
2 cols. x 7 inches

MAT—213



WILLIAM FAULKNER'S
SANCTUARY
starring
LEE REMICK • YVES MONTAND • BRADFORD DILLMAN
A Darryl F. Zanuck Productions, Inc.
CINEMASCOPE
RELEASED BY 20th CENTURY-FOX
S I G

87 lines x 2 cols. (174 lines)
2 cols. x 6 1/2 inches

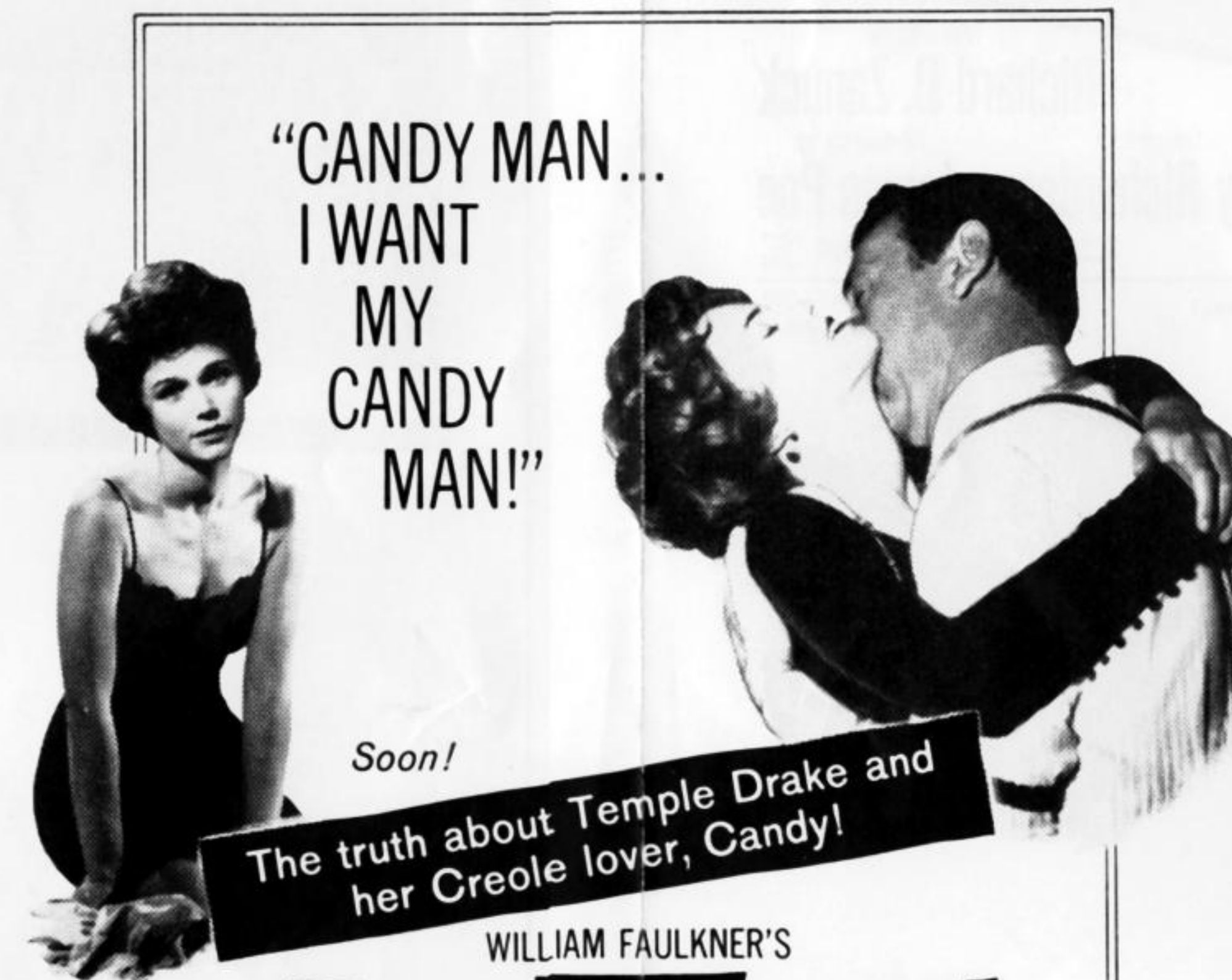
MAT—215



Soon you will meet him...
in William Faulkner's
SANCTUARY
starring
LEE REMICK • YVES MONTAND • BRADFORD DILLMAN
A Darryl F. Zanuck Productions, Inc.
CINEMASCOPE
RELEASED BY 20th CENTURY-FOX
S I G

88 lines x 2 cols. (176 lines)
2 cols. x 6 1/4 inches

MAT—212



Soon!
The truth about Temple Drake and
her Creole lover, Candy!

WILLIAM FAULKNER'S
SANCTUARY
starring
LEE REMICK • YVES MONTAND • BRADFORD DILLMAN
A Darryl F. Zanuck Productions, Inc.
CINEMASCOPE
RELEASED BY 20th CENTURY-FOX
S I G

88 lines x 3 cols. (254 lines)
3 cols. x 6 1/4 inches

MAT—310



Soon you will meet him...
in William Faulkner's
SANCTUARY
starring
LEE REMICK • YVES MONTAND • BRADFORD DILLMAN
A Darryl F. Zanuck Productions, Inc.
CINEMASCOPE
RELEASED BY 20th CENTURY-FOX
S I G

84 lines x 2 cols. (168 lines)
2 cols. x 6 inches

MAT—211

"The
serpent
beguiled
me,
and I
did eat!"
Genesis III. 13



Soon!
THE TRUTH ABOUT TEMPLE DRAKE...
HER SIN —AND HER REDEMPTION!

WILLIAM FAULKNER'S
SANCTUARY
starring
LEE REMICK • YVES MONTAND • BRADFORD DILLMAN
A Darryl F. Zanuck Productions, Inc.
CINEMASCOPE
RELEASED BY 20th CENTURY-FOX
S I G

92 lines x 2 cols. (184 lines)
2 cols. x 6 1/2 inches

MAT—214



Soon you will meet her... in William Faulkner's

SANCTUARY
starring
LEE REMICK • YVES MONTAND • BRADFORD DILLMAN
A Darryl F. Zanuck Productions, Inc.
CINEMASCOPE
RELEASED BY 20th CENTURY-FOX
S I G

108 lines x 2 cols. (216 lines)
2 cols. x 7 1/4 inches

MAT—210



Soon you will know...
the secret sensual sins of
Temple Drake!

WILLIAM FAULKNER'S
SANCTUARY
starring
LEE REMICK • YVES MONTAND • BRADFORD DILLMAN
A Darryl F. Zanuck Productions, Inc.
CINEMASCOPE
RELEASED BY 20th CENTURY-FOX
S I G

63 lines x 1 col.
1 col. x 4 1/2 inches

MAT—111

"He that is without sin among you,
let him first cast a stone at her."
ST. JOHN VIII, 7

Seared by the fires
of her desperate
desires, tormented
by the new-found
emotions within
her...



...she rose from
degradation to find
redemption at the
hands of the woman
her silence had
condemned to the
gallows.

"Greater love hath no man than this, that
a man lay down his life for his friends."
ST. JOHN XV, 13

Darryl F. Zanuck Productions, Inc. presents
WILLIAM FAULKNER'S
SANCTUARY
A CinemaScope Picture

STARRING
**LEE REMICK
YVES MONTAND
BRADFORD DILLMAN**
Produced by Richard D. Zanuck
Directed by Tony Richardson
Screenplay by James Poe

S I G

138 lines x 3 cols. (414 lines)
3 cols. x 9 7/8 inches

MAT—301

Darryl F. Zanuck Productions, Inc. presents
WILLIAM FAULKNER'S

SANCTUARY

CANDY...the Creole
lover who taught her
the ways of evil!

TEMPLE DRAKE...who sank
into degradation and rose
to seek redemption!

GOWAN...the husband
whose weakness nearly
destroyed them all!

NANCY...who laid down her
life that those who lived
might find salvation!

GOVERNOR DRAKE...
the father who
found out about his
daughter too late!

STARRING
**LEE
REMICK
YVES
MONTAND
BRADFORD
DILLMAN**

Produced by
Richard D. Zanuck
Directed by
Tony Richardson · Screenplay by
James Poe

S I G

126 lines x 3 cols. (378 lines)
3 cols. x 9 inches

MAT—302

Darryl F. Zanuck Productions, Inc. Presents WILLIAM FAULKNER'S

SANCTUARY

From the
depths of
degradation
she rose to seek
redemption!
The story of
Temple Drake

... told with
fearless frankness
by the famed
Nobel Prize winner!

CINEMASCOPE

STARRING
LEE REMICK · YVES MONTAND · BRADFORD DILLMAN
Produced by
RICHARD D. ZANUCK
Directed by
TONY RICHARDSON · Screenplay by
JAMES POE

78 lines x 4 cols. (312 lines)
4 cols. x 5 1/2 inches

MAT—407